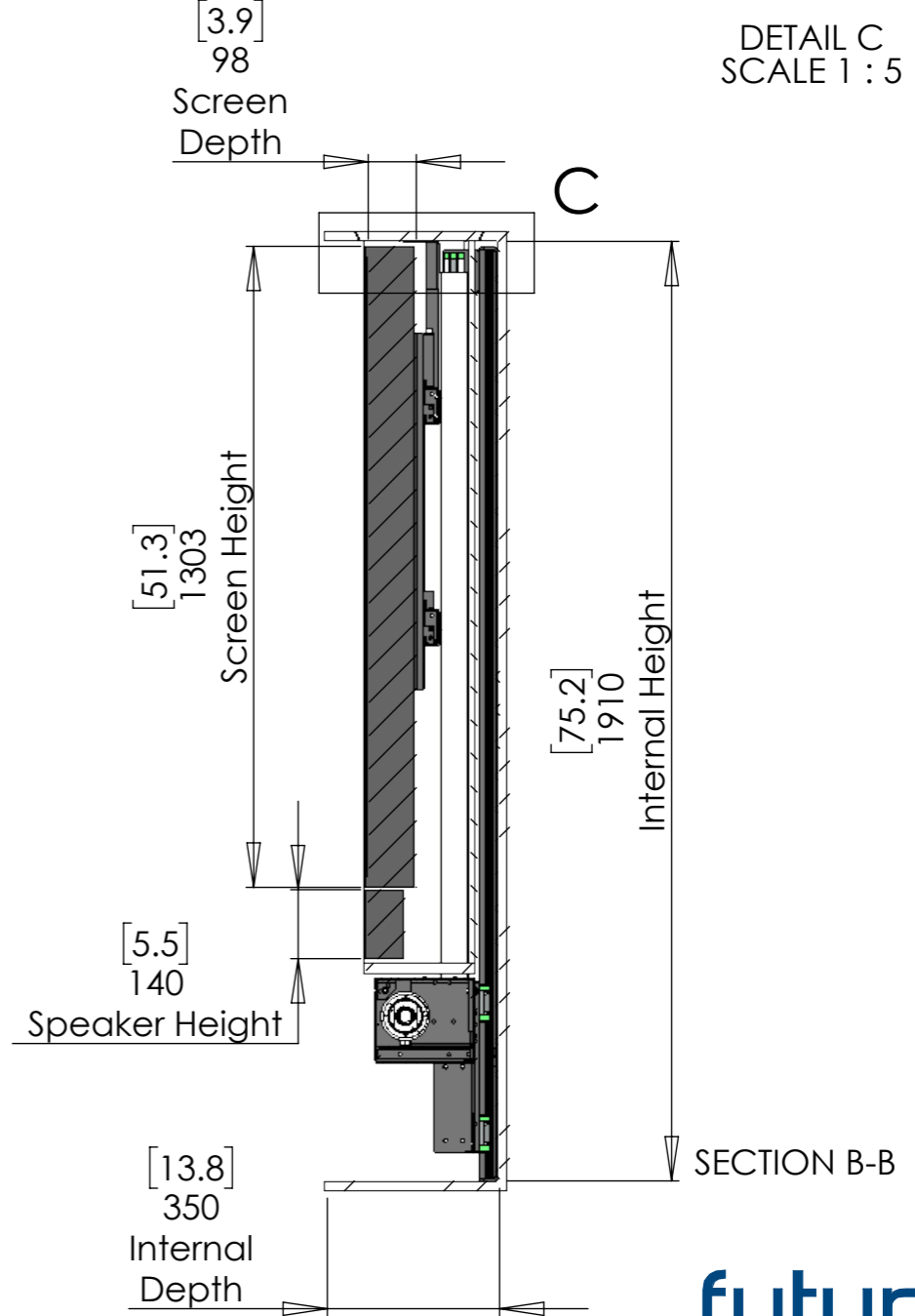
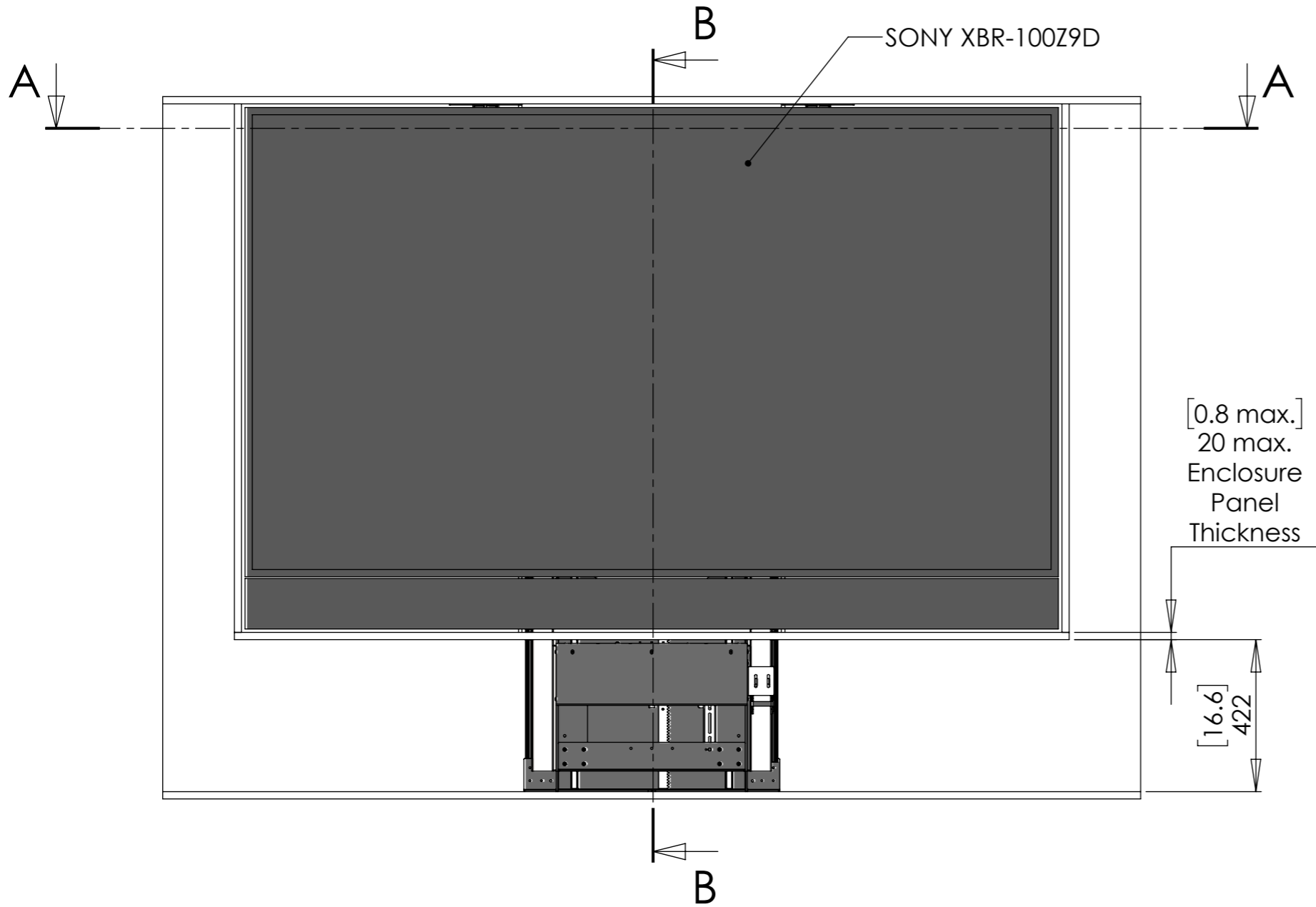
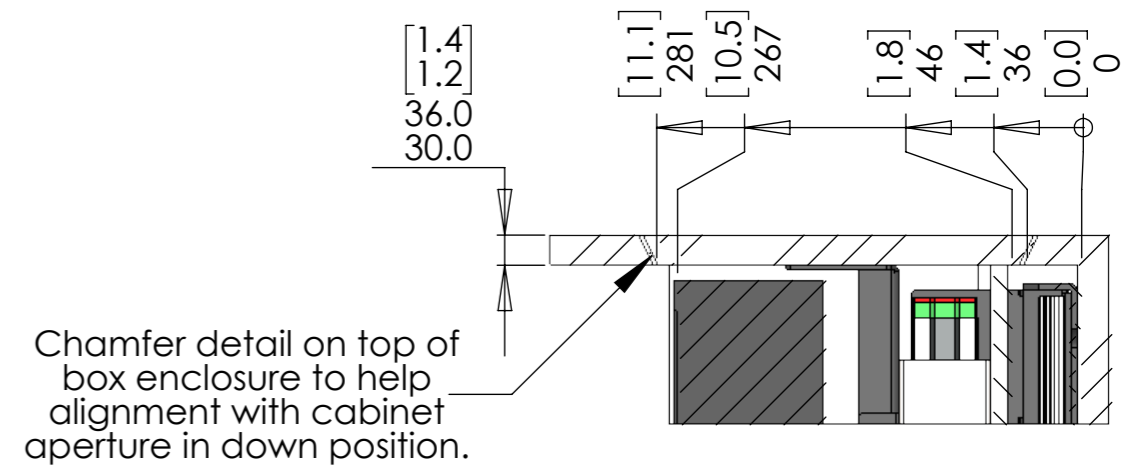
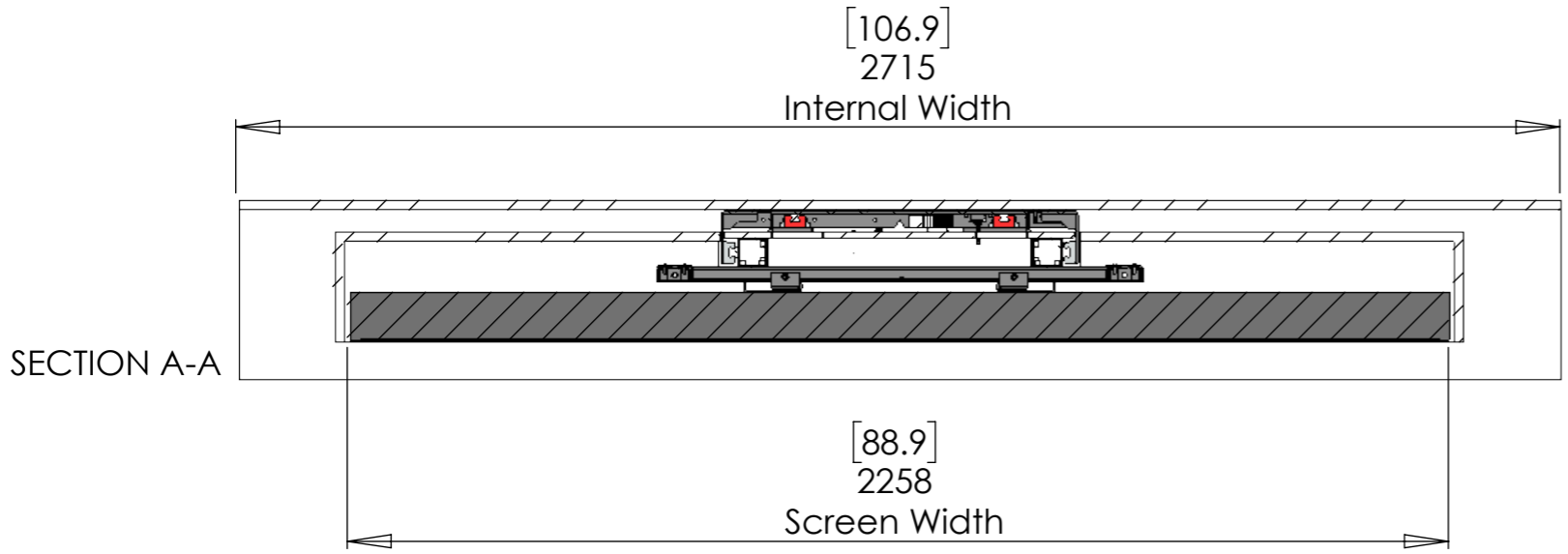
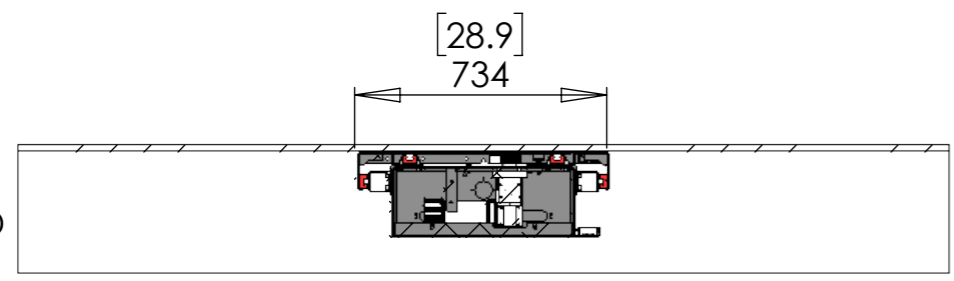


# LSH-BE-100 - Bespoke Lift System Heavy for Box Enclosure



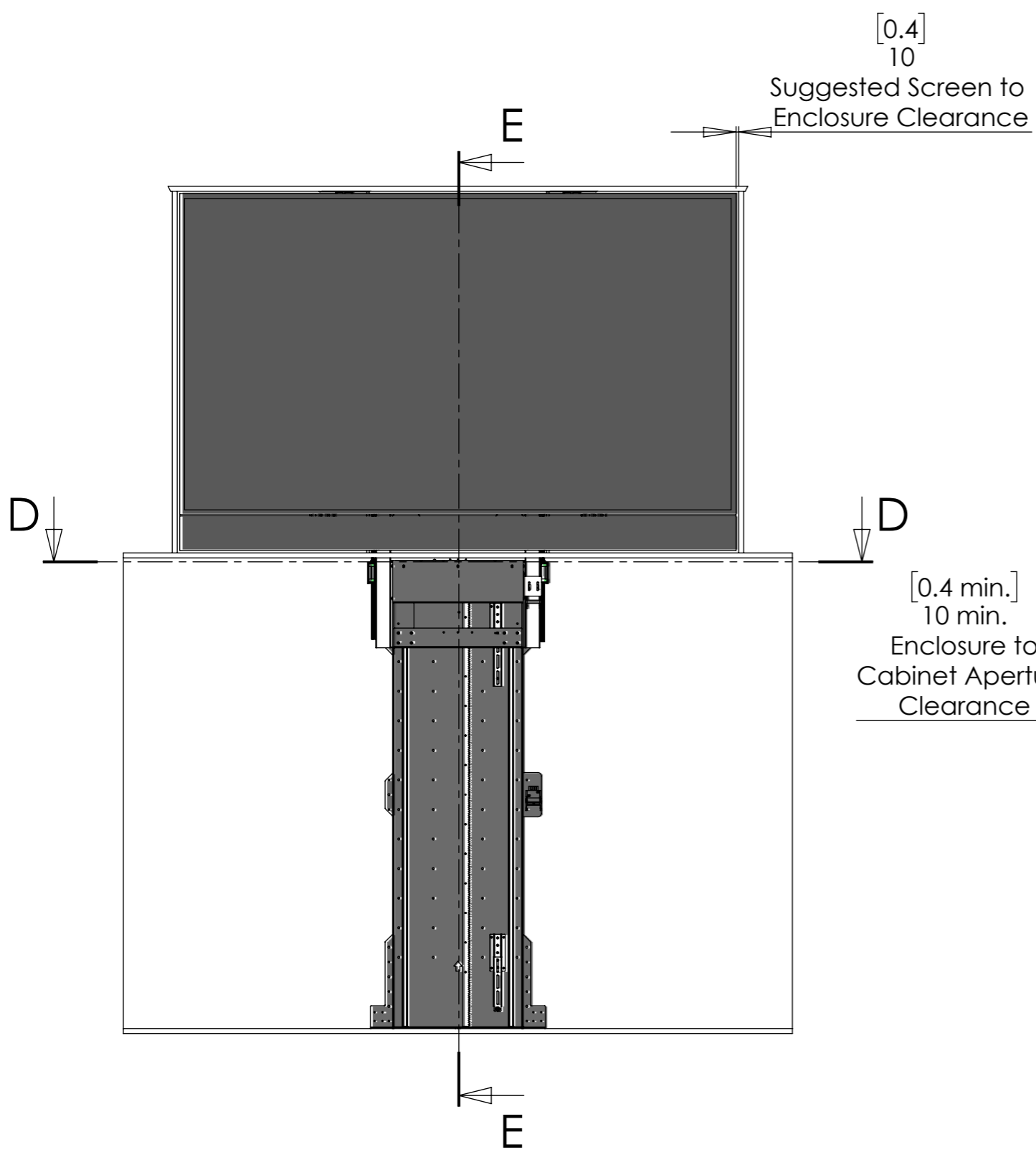
# LSH-BE-100 - Bespoke Lift System Heavy for Box Enclosure

SECTION D-D  
SCALE 1 : 22

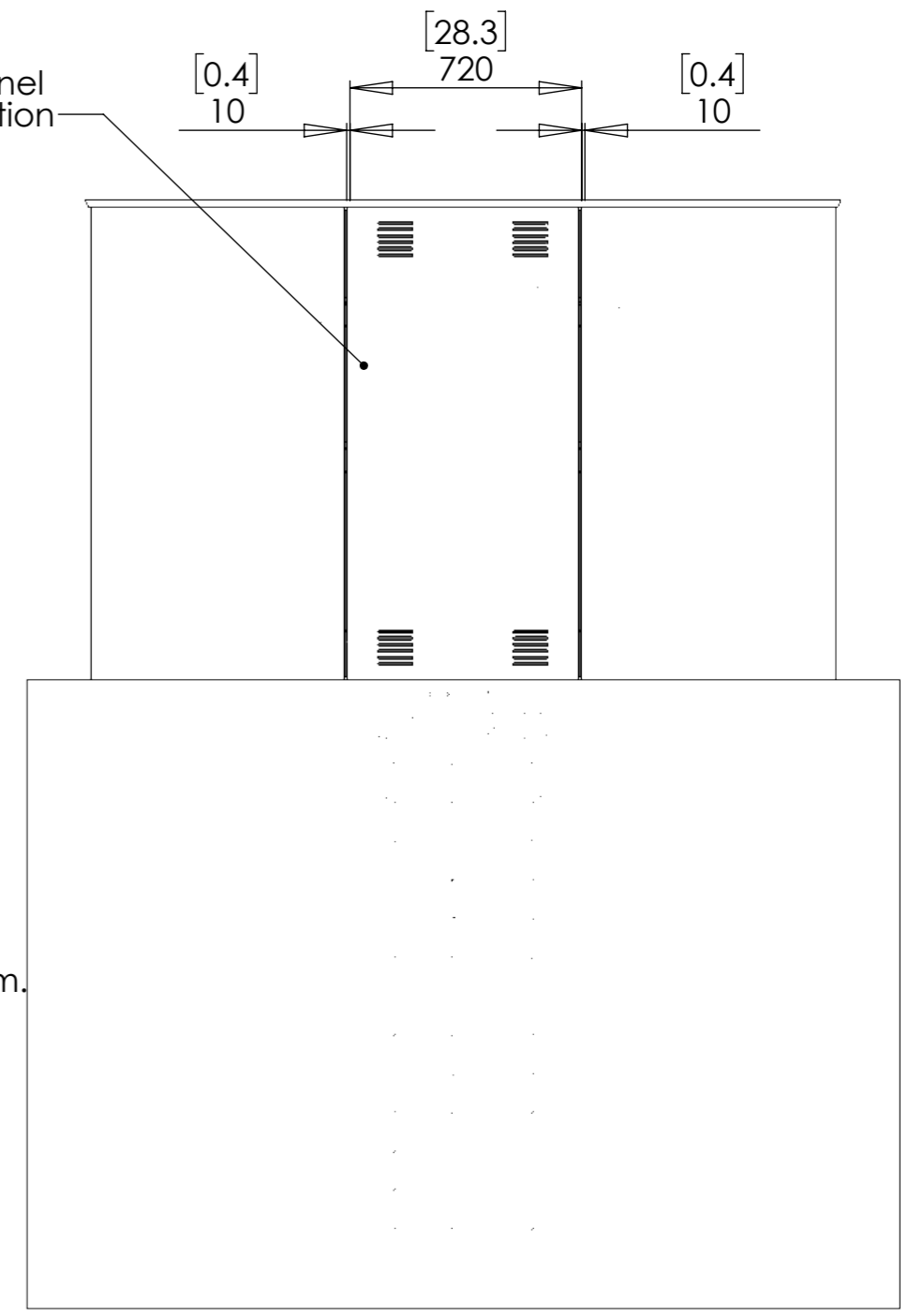
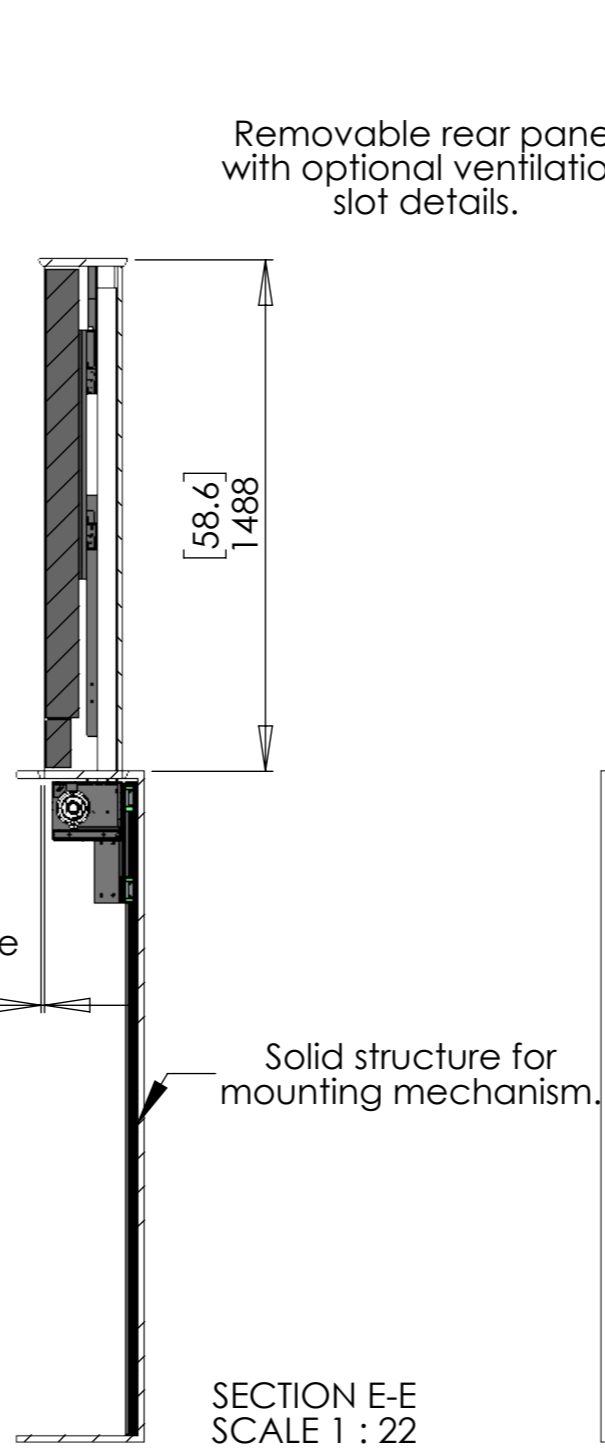


NOTE:

**ENCLOSURE MAX WEIGHT  
= 80kg [176lbs]**



Removable rear panel with optional ventilation slot details.



SECTION E-E  
SCALE 1 : 22