



Qmotion[®]uk⁺
advanced shading systems

Automated Wire Free Shades
Healthcare

The **NEW** solution to automation in window treatments

QMotion UK shades provide unobtrusive privacy and light control with the proper balance between design and function for healthcare spaces. Whether used in patient rooms or common spaces the benefits of quiet shade control with the push of a button are obvious.

To simplify light management in common spaces, QMotion UK shades may be managed by interfaces to facility management systems, or by simple chronological controls providing up to six scene settings per day.

Through the proper selection of solar shade fabrics, natural light can be moderated, providing a more healthy lighting experience in the healthcare environment. QMotion UK offers a wide assortment of Greenguard and Antimicrobial fabrics.

With unique inbuilt technology, the QMotion UK shade also provides a dual control feature that allows the user to operate the shade manually.

By simply tugging the bottom bar you can lower the shade or send the shade back up to either its last pre-set position or to a fully raised position, bringing a new level of convenience to shade controls.

Power for the shade is provided by standard readily available alkaline D cell batteries. Due to the special counter balancing springs installed within the roller itself the batteries provide 2-5 years operation based on an average 2 fully raise/fully lower movement changes per day normal usage.

Easy Battery Replacement

By placing the access port for the readily available alkaline D cell batteries in the shade tube wall, you can now change the batteries without having to remove the shade from the brackets.

Easy Fabric Removal and Installation

The spline that attaches the roller shade fabric to the tube permits the fabric to be easily removed for cleaning, maintaining and sanitising or easy replacement.



If you want to change your fabric for decorative or for promotional signage reasons your QMotion UK Distributor can order a new QMotion UK fabric for use on your existing hardware providing unique longevity and return on investment from your window covering.

Please ask your QMotion UK Authorised Distributor to show you our full range of fabrics that are available for use with the system.



- Completely wire free motorisation - no exposed wires or RF antennas
- Manual override (blind can be moved by hand without the need for a transmitter)
- Easy three minute set up after installation to provide upper and lower stop positions as well as automatically including three intermediate equal and aligned stop positions
- Powered by standard readily available D cell type batteries giving 2-5 years operation based on 2 cycles per day normal usage
- Batteries can be changed over easily by anyone as they are contained within the shade hardware itself
- Low Voltage wired shades available as an option complete with manual override
- QMotion UK shades come complete with a five year warranty

QMotion UK Control Options

Along with the newest and most innovative control technology QMotion UK shades can interface with nearly all Home Automation systems either new or existing within your home. QMotion UK has developed the following accessories to make interfacing as easy as possible.

Qconnect



Interface communication device to support integration with most home control systems.

- RS-232 / RS-485
- Dry contact interface
- 15 channel
- 9V DC or power over CAT 5
- 15 metre range of signal - further Qconnects can be added to increase range

Programmable Timer Remote



Works the same as a single channel remote plus programmed automated settings.

- Supports 6 events
- Windows PC programmable
- Time of day, days of week

Multi-Channel Remote



Up to 6 individual or group settings plus an "ALL" setting.

- Up to 3 custom presets
- LED feedback
- Motion activated channel indicator

Qrelay



Improves signal reception where factors effect remote transmission.

- Extends range of all QMotion UK remotes
- Powered from a wall outlet or from a powered USB port
- Two modes of operation

Qsync

QMotion UK Smartphone Application "App" Features:

- Control QMotion UK shades with iOS and Android
- Virtual Shade: Drag your finger to place the shade to the desired positions
- Connects automatically to Wifi* and Bridge. "Plug and Play"
- Channel System to name, take and set reference photo to group shades
- Step by Step setup for learning, setting lower limit, and deleting shades
- Control nearly 500 shades or groups from each Qsync TCP/IP to 433Mhz bridge* (Automatic Wifi Connection not available on iOS)



Remote Wall Station

For the convenience of the user, consider a Wall Docking Station.

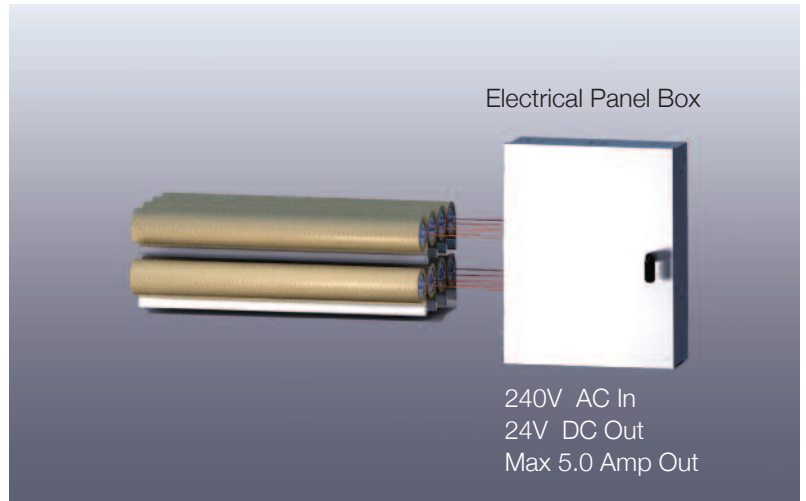
Available in single, double and triple gang versions, these wall plates are built to install on a wall as a place to retain the transmitters used in a project. Remote controls hold in place on the docking station via a strong magnet. Wall plates are flush mounted and do not require routing a hole in drywall or other mounting wall finishes. For places where a remote should be "permanently" attached to a wall, our wall plate keeps mount around the remotes, making them virtually impossible to remove without a screwdriver.



Low Voltage Power Option

QMotion UK offers a low voltage power option

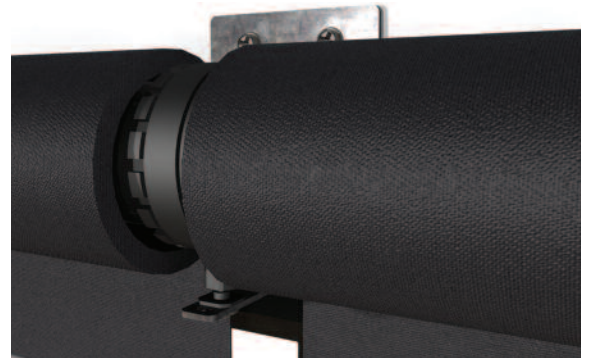
- Tube is configured to convert low voltage into the proper level to power the shade
- No need to purchase dedicated power supplies with various voltage levels
- Transformer has the option to be dinrail mounted in an electrical panel box or fixed alone. Power supply available for up to 8 shades
- Each shade comes with a 300mm wire lead
- Includes manual override system
- QMotion UK does not supply the cables from the transformer to the shades



Please note this requires a qualified electrician for installation of mains power supply for shade operation

Linked shades - Qlink

- Another first is our wire free linked shade system
- Multi-window covering using one motor to drive multiple linked shades (size dependent)
- Manual override facility
- Available up to a maximum width of 7.3 metres



QMotion UK Printed Shades

In addition to providing glare and heat control, QMotion UK shades are ideal to display logos, special announcements, window signage, and additional display areas.

- Promotional signage
- Advertising
- Signs and banners
- Restaurants
- Showrooms
- Scenic designs
- Space dividers
- Exhibits



Revised January 2015

QMotion UK, 2 Cleveland Way, Hemel Hempstead, Hertfordshire, HP2 7DL, United Kingdom
UK Tel +44 (0) 845 450 1606 info@qmotionshades.co.uk www.qmotionshades.co.uk