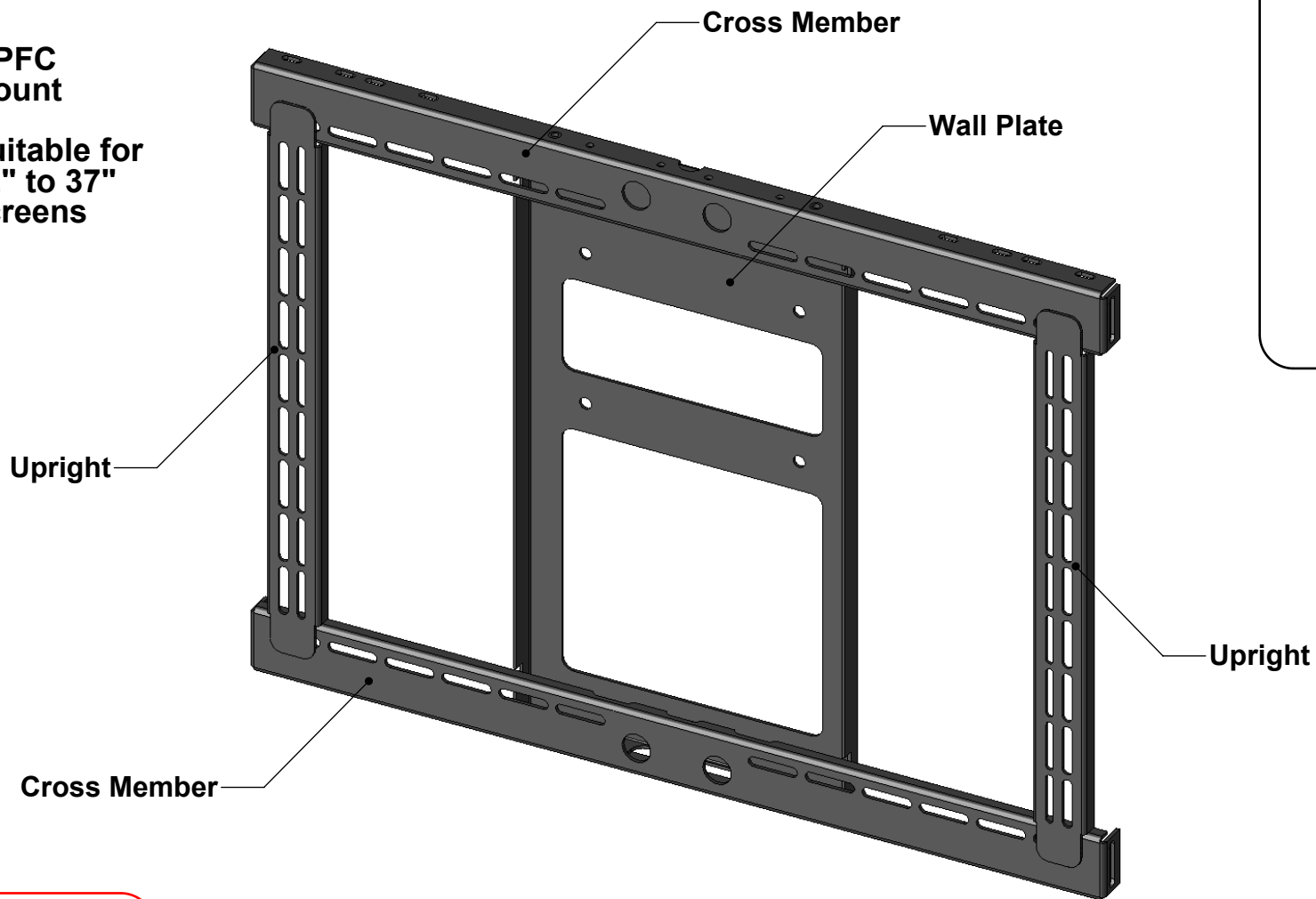




Your Pack Should Contain

1 PFC
Mount

Suitable for
32" to 37"
screens



WARNING

It is the responsibility of
the installer to make sure
this product is safely
secured to the wall or
ceiling.





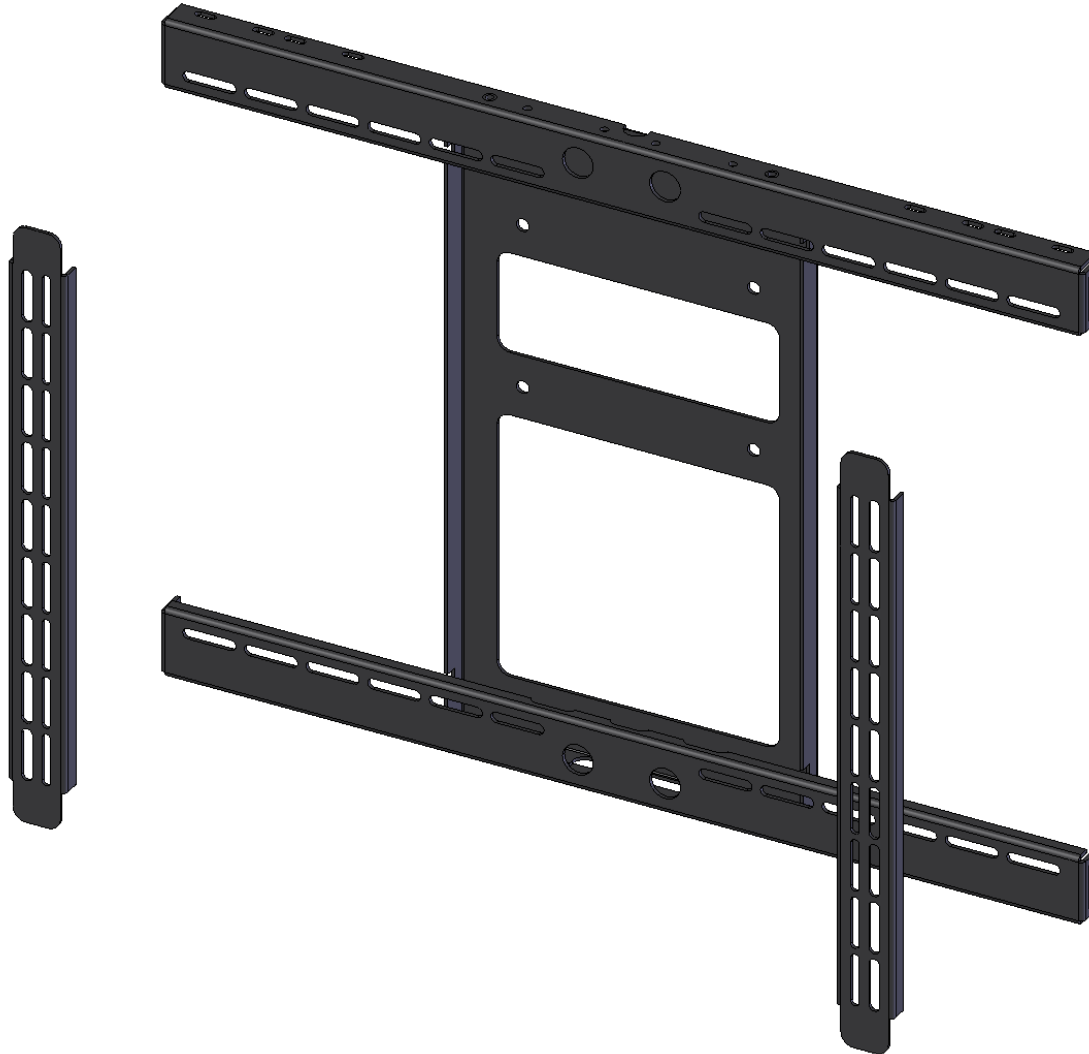
UPRIGHTS

The bracket is supplied with the uprights attached to the frame.

These need to be removed to enable ease of attachment to the rear of the plasma screen. Simply undo the nuts on the rear of the cross members and the uprights should come off.

Stage 1

Remove framework from wall plate

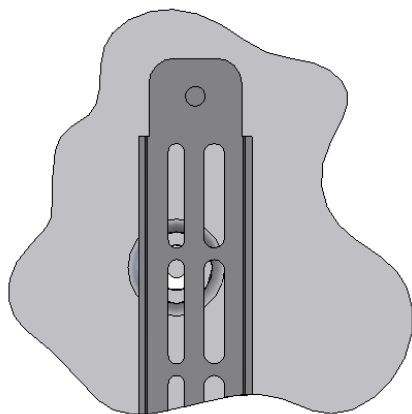
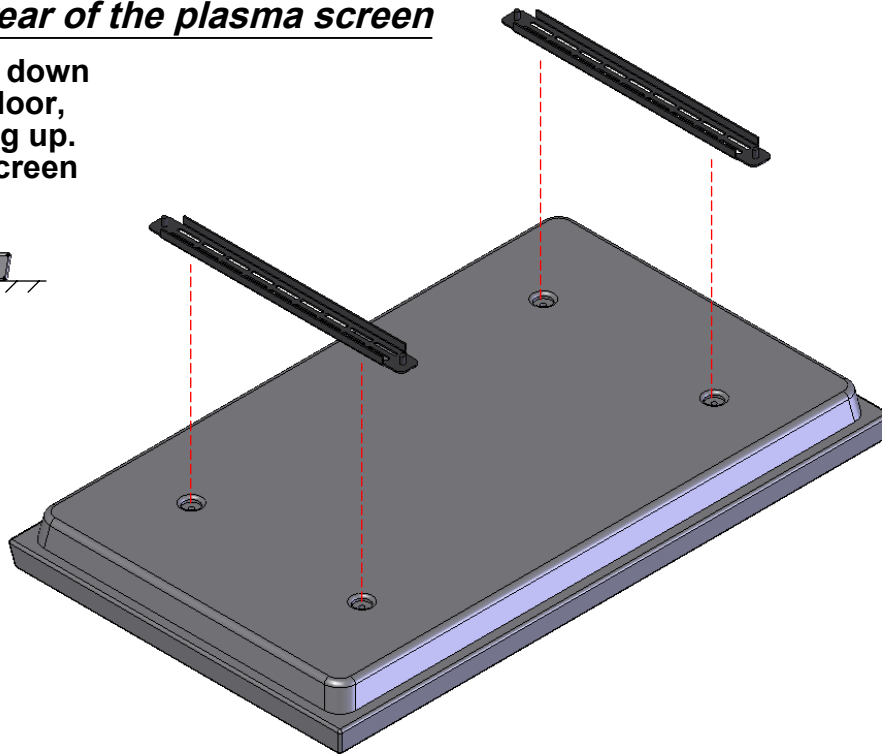




Stage 2

Fitting the uprights to the rear of the plasma screen

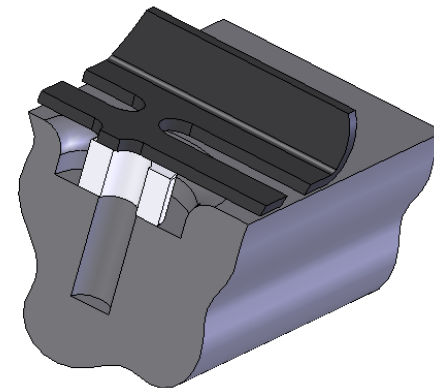
Firstly, place the plasma screen down on a flat surface, such as the floor, with the rear of the screen facing up. Take care not to damage the screen



UPRIGHTS

The uprights are designed with two rows of slots. One row is 7mm wide, for smaller bolts. The other is 9mm wide, for larger bolts.

Once flat, lower the uprights onto the back of the screen and bolt down to the mounting points using suitable bolts. Keep the uprights symmetrical in order to maintain a central position for the screen.

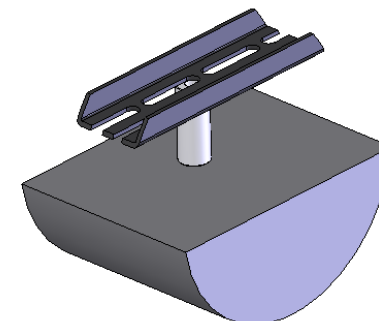


SPACERS AND BOLTS

If the screen has mounting points which are recessed, it will be necessary to use some of the provided spacers, in order to attach the uprights to the screen.

It is also recommended that a minimum of 15mm of bolt thread is screwed into the case of the screen, without bottoming out.

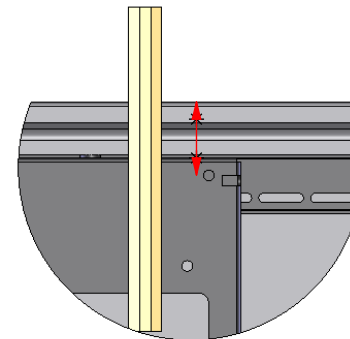
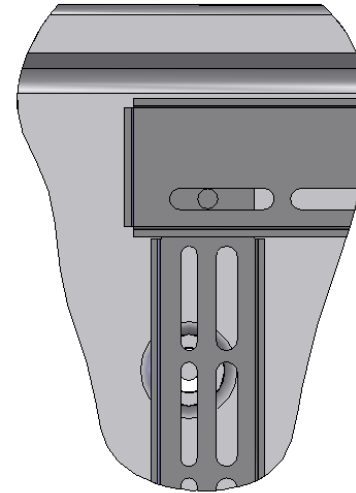
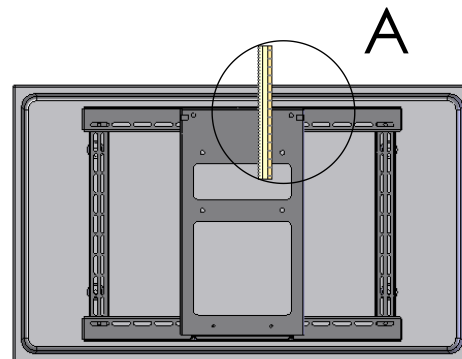
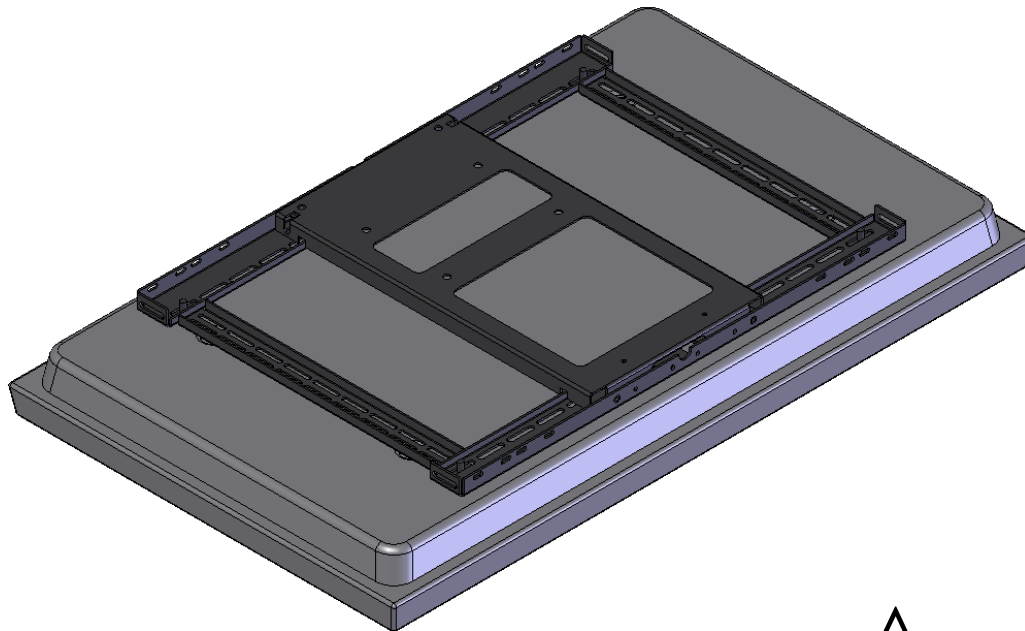
It may be necessary to use spacers even if the mounting points are not recessed. For example, if the back panel is not flat, or to allow for easier electrical connection.





Stage 3

Fixing the frame to the plasma



DETAIL A
SCALE 1 : 7

RE-POSITIONING UPRIGHTS

If when the frame is placed on the back of the screen, the overlaying slots don't appear to locate with the bolts on the uprights, it may be necessary to flip over the uprights.

Simply remove the uprights. If, for example, the wider slots were previously on the inside of the mounting points, turn the uprights around so they are then on the outside.

SCREEN POSITION

Take this opportunity to measure the distance from the top of the plasma screen down to the top mounting holes of the wall plate. This will be useful when gauging the position of the screen, and hence the position of the holes in the wall.

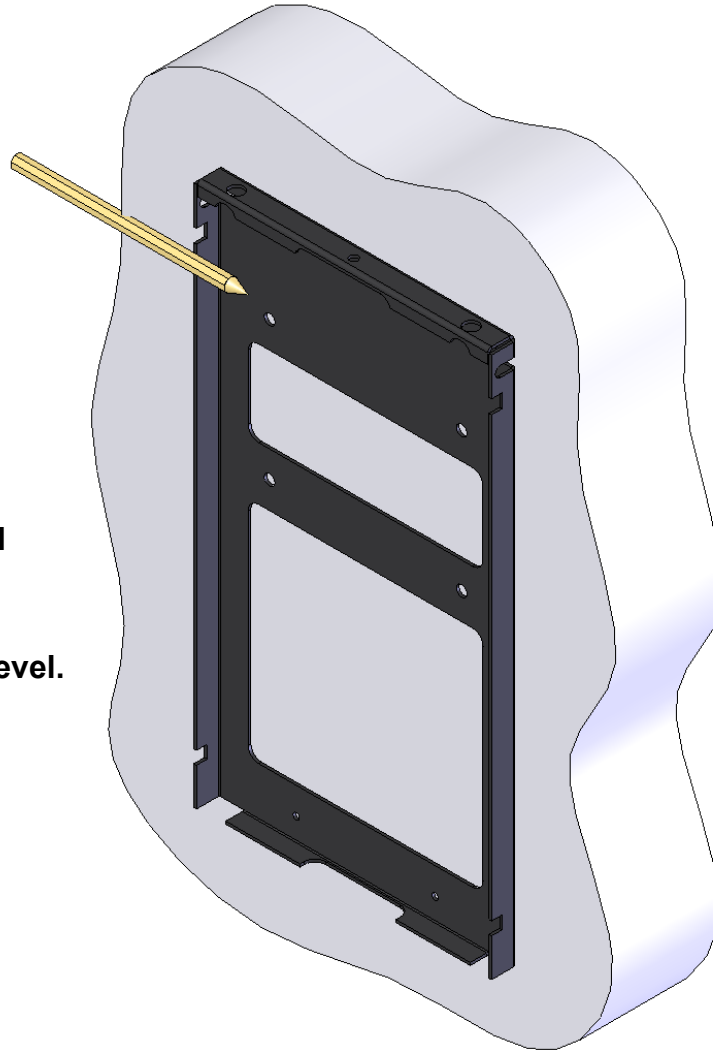




Stage 4

Fitting the wall plate

Bearing in mind the relative distance from the top of the plasma screen to the top mounting holes, place the wall plate against the wall, and mark where the holes need to be on the wall. Take care with making sure the wall plate is level.



POSITIONING

It is important to remember where the screen is going to be viewed from when deciding on its position on the wall.

FIXING

There are no wall fixings supplied with this product.

The wall plate has 10mm diameter holes for the fixings. Therefore, it is recommended that fixings of minimum 8mm diameter are used.

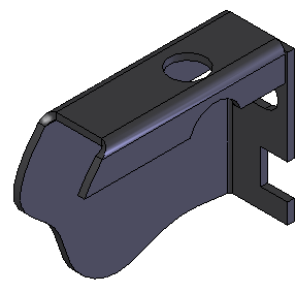
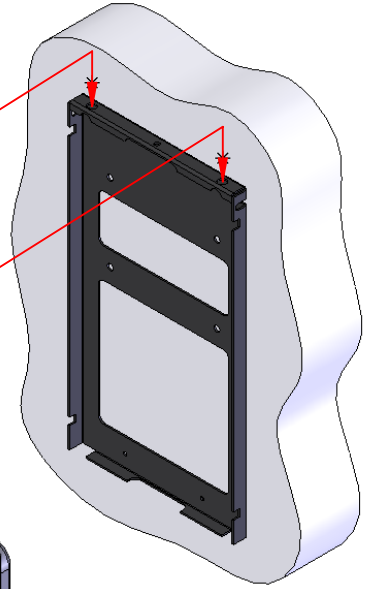
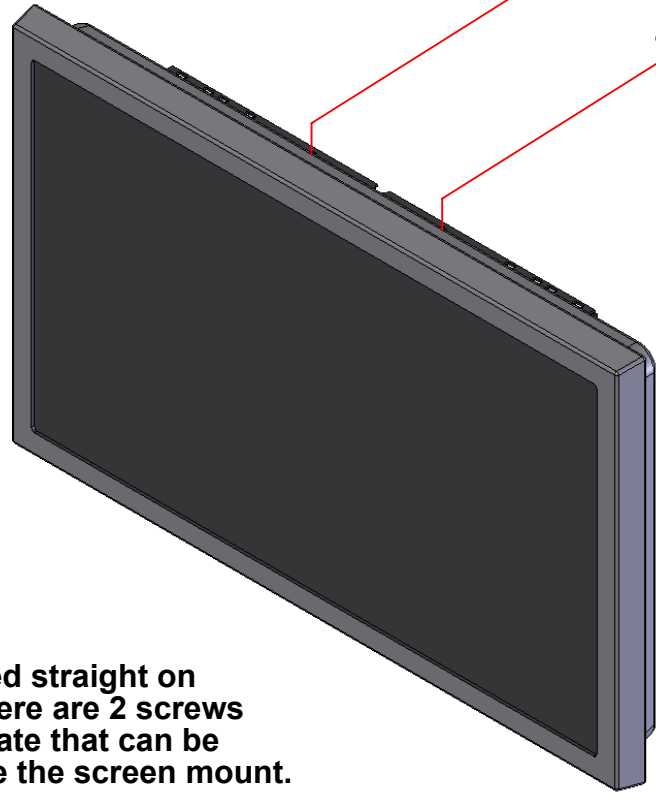
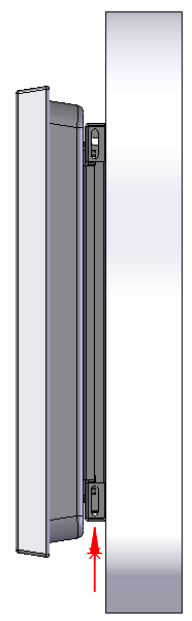
It is recommended that either rawlbolts, large diameter plastic wall plugs, or resin anchors are used to fix this product to the wall.

Suitability of fixings will depend on the type of wall the product will be fixed to.





Stage 5
Fitting the screen to the wall plate



If the screen is being mouted straight on to a wall, not in a recess, there are 2 screws on the bottom of the wall plate that can be screwed in to further secure the screen mount.

If you are mounting in a recess, then this is not possible, and the mount only sits on the 2 bosses that are located at the top of the wall plate. This is why it is so VERY important to locate the bosses correctly.

FIXING BOSSES

There are 2 bosses on the under side of the top cross member.

These bosses need to be located within the 2 holes on top of the wall plate.

It is **VERY** important that these bosses are located within the holes properly and securely.

