

PDU FIRMWARE UPGRADE METHOD:

When upgrading the firmware on the P2, P8, and P20, please have the following ready:

- 1) PC or Laptop with Windows OS
- 2) An object that is able to fit into the 'Upgrade' pinhole



- 3) One USB-A to USB-A cable, to connect between PC/Laptop and PDU.
- 4) Download "SAM-BA" software from the firmware downloads section and install on to your PC/Laptop.

HOW TO:

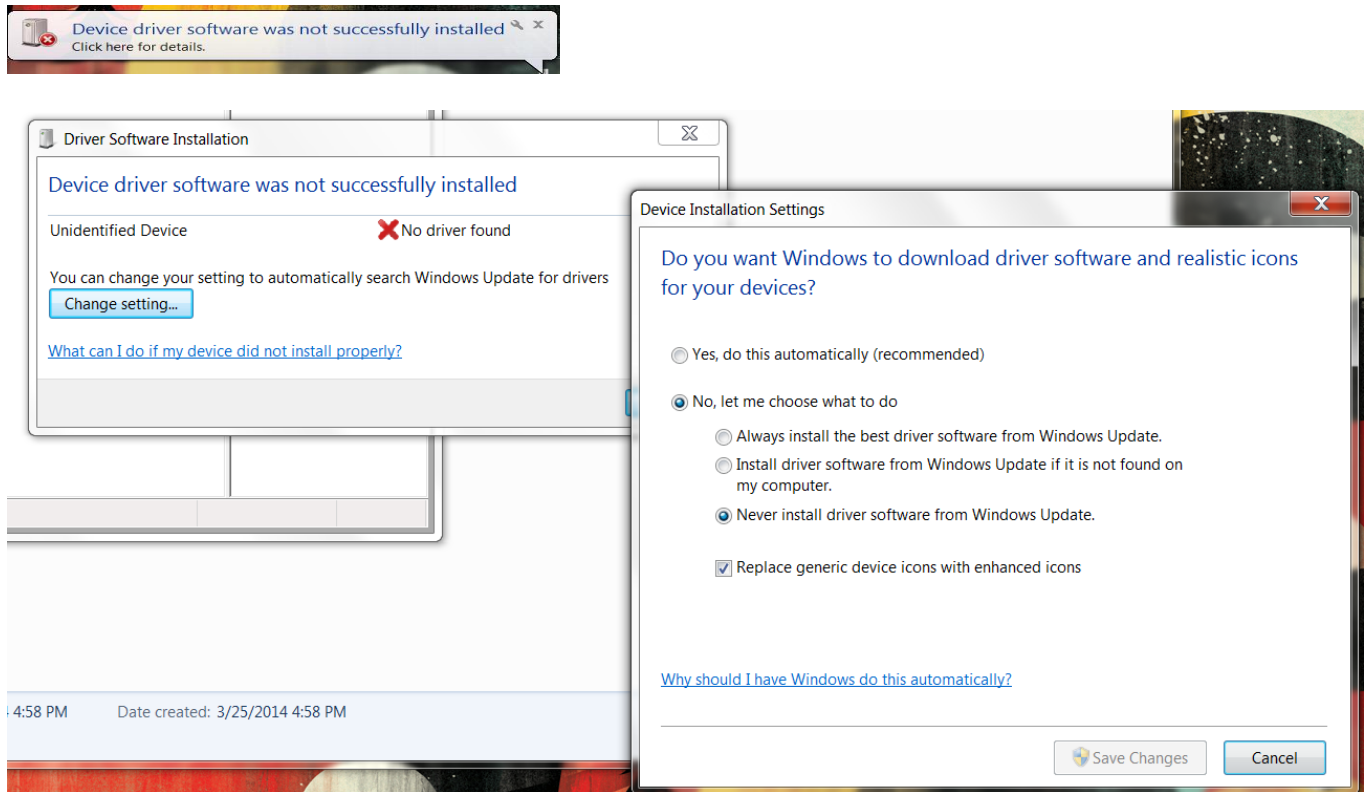
Step1 - Power on PDU. To verify the PDU is fully powered on, the PWR, 1, and 2 lights should be on (view image below).



Step2 - Using the object for the pinhole button on the PDU, please hold down the 'Upgrade' button for 3 seconds (view image below). After 3 seconds, power off the PDU and ONLY release the 'Upgrade' button once the power LED is off.

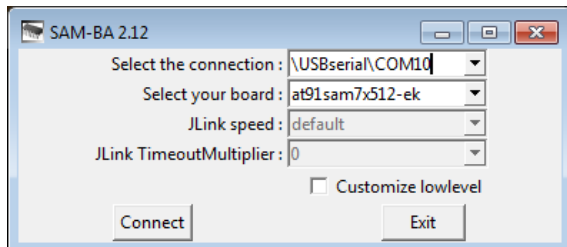


NOTE: PLEASE FOLLOW STEP2 THOROUGHLY. IF STEP2 IS NOT FOLLOWED PROPERLY, THIS MAY CAUSE AN ISSUE AT STEP4. THE SOFTWARE MAY NOT RECOGNIZE THE USB CABLE. (ex - error below):

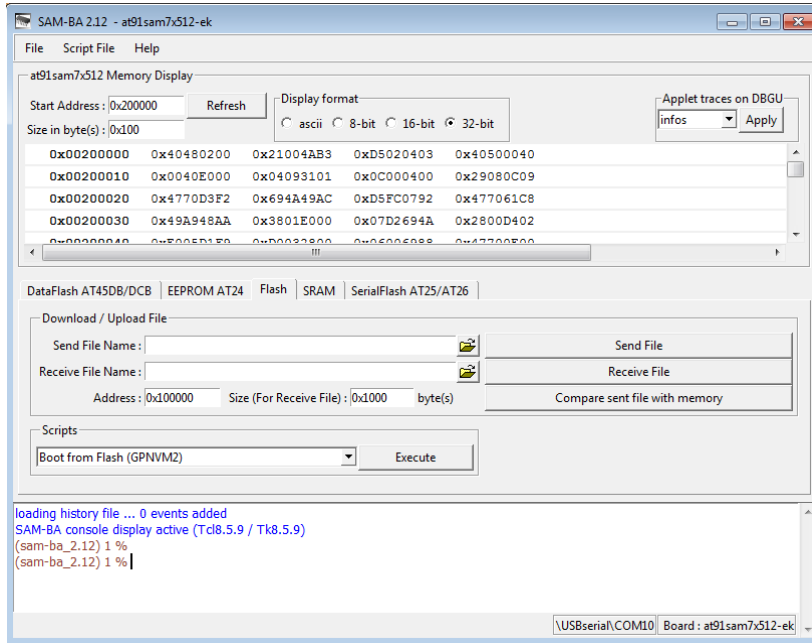


Step3 - While the PDU is powered off, please connect the PDU and PC/Laptop using the USB cable. Once connected, then the PDU may be powered on.

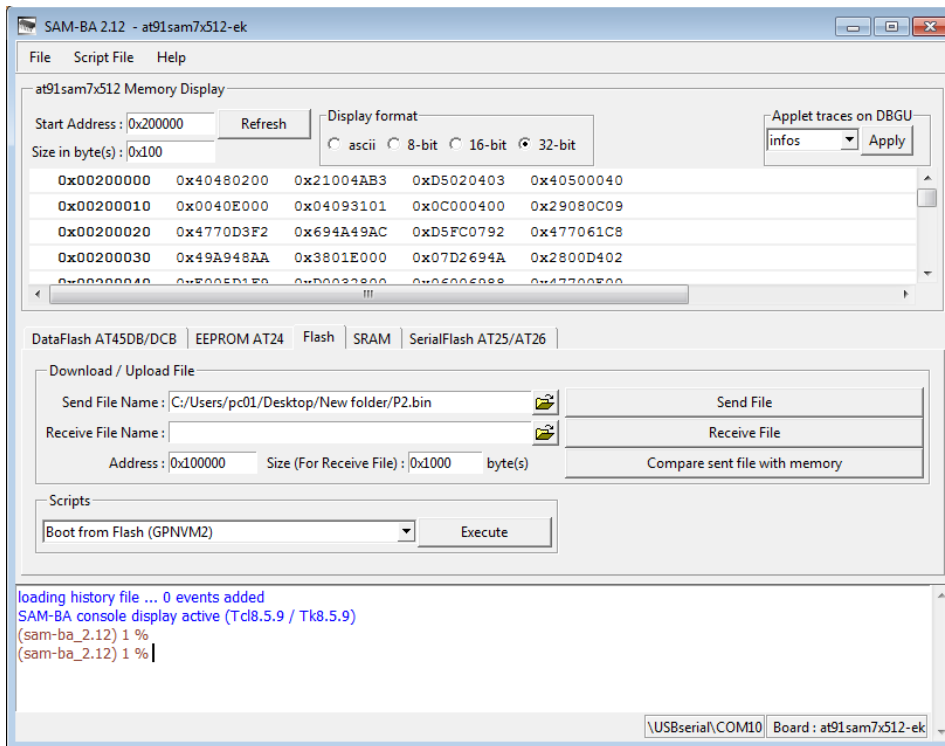
Step4 - Run upgrade "SAM-BA" software installed on PC/Laptop. - Select the connection "\USBserial\COMx" and Select your board "at91sam7x512-ek" as shown below:



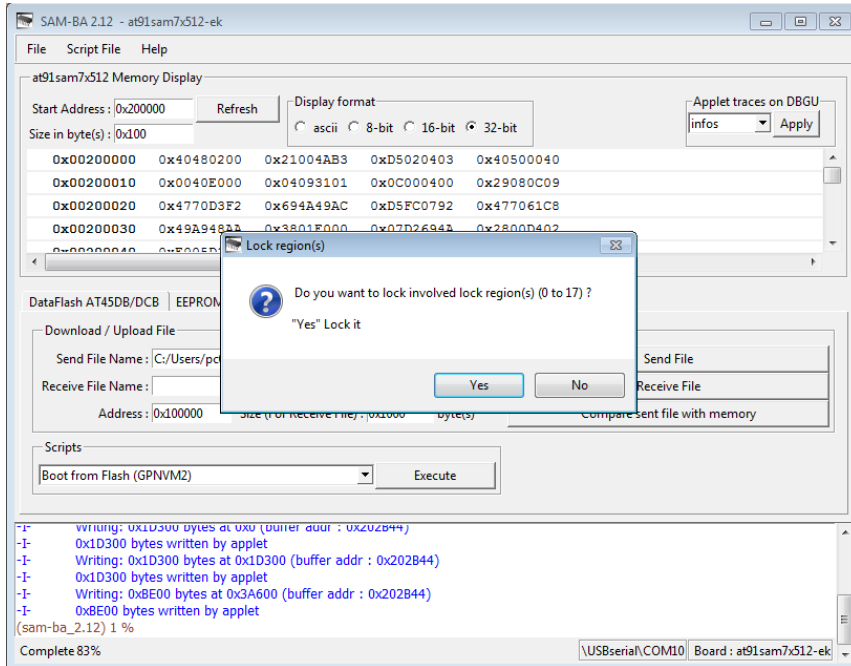
Step5 - After selecting the necessary options, click on the **Connect** button and the following interface should appear:



Step6 - Next to the 'Send File Name' box, please use the folder icon to the right to Browse for the xx.bin PDU Firmware file. Once this file has been selected, the 'Send File Name' box will have display the file location as the image below:

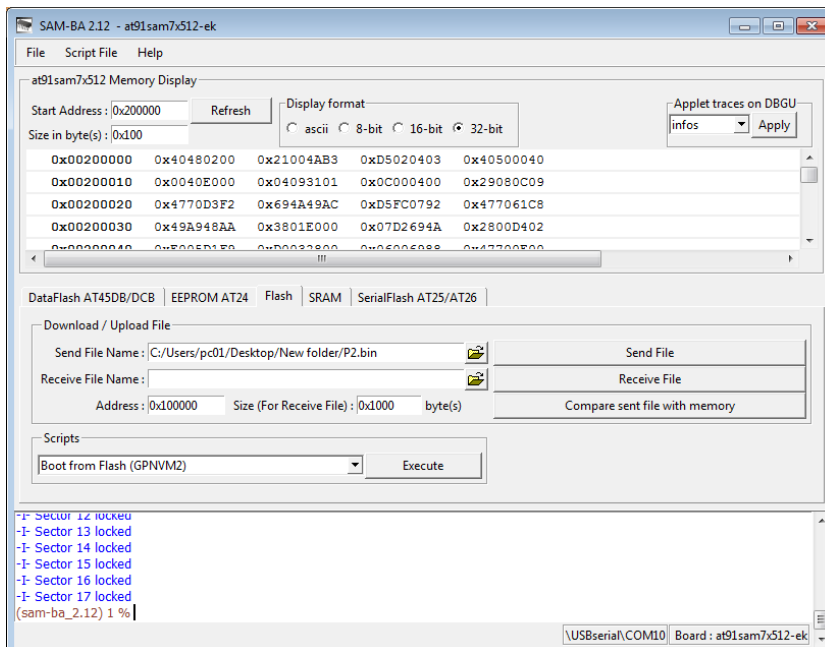


Step7: At this time, please send the file by selecting the **Send File** button and the process will begin.

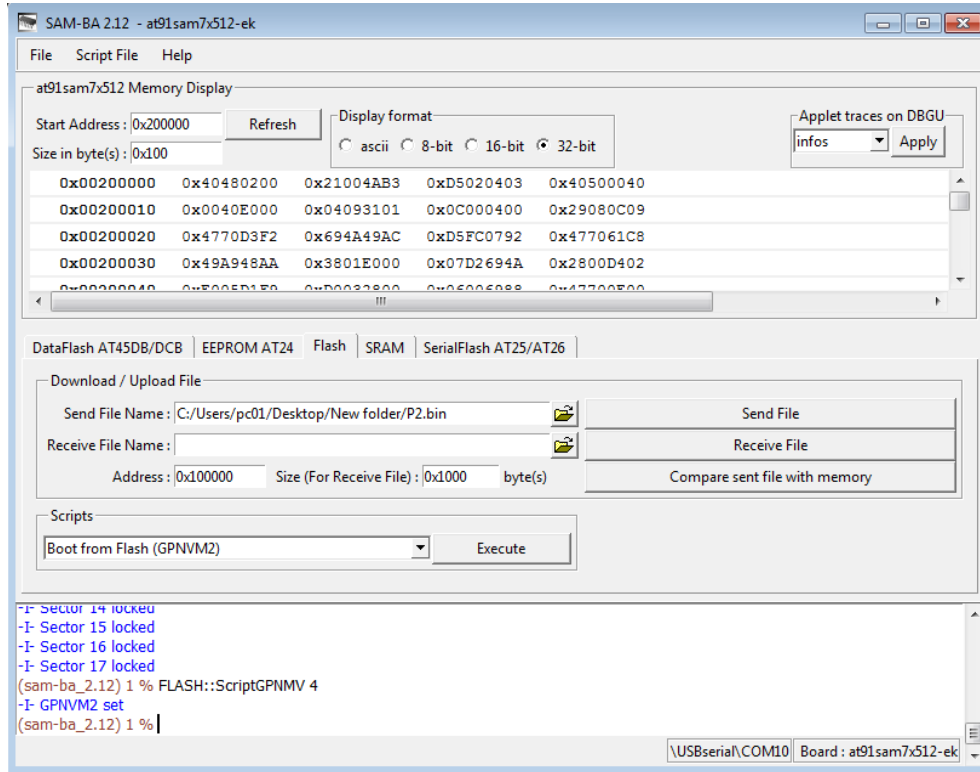


Step8: The software will then display a *Lock region(s)* pop-up: **Do you want to lock involved lock region(s) (# to #)?** as shown above, please click on 'Yes'.

Step9: At this time, the software will display similar to the following:



Step10: Next, please click on the **Execute** button so the interface will show as below:



The firmware upgrade has now been completed. Please reboot PDU.