



# KD-BYOD4K FOR EDUCATION

SIMPLE BRING YOUR OWN DEVICE INTEGRATION  
FOR CLASSROOMS AND EDUCATIONAL FACILITIES

# DO MORE WITH



## ALL DEVICES WELCOME: WINDOWS, MAC, CHROME OS, iOS & ANDROID™

KDPlay™ supports all 5 major operating platforms™, so your dedicated and freelance staff, guests teachers, or student body are all able to use their devices to share content.



## WIRELESS PRESENTATION

Perfect for classrooms, auditoriums, learning labs, and all other educational facilities. Simply choose a WiFi connected KDPlay™ device to present on a big screen and learn/review in a group.



## COLLABORATIVE LEARNING

Work together in teams with ease by casting side-by-side from up to four devices simultaneously. Up to four presenters may share content at same time with auto adjusting screen layout.



## INTERACTIVE REAL-TIME SCREENS

Screen overlay tools for real-time learning in new, engaging, and intuitive ways with markups, annotations and drawings. Whiteboard mode for live, on-screen teaching retrievable via QR codes.

# LET'S MAKE IT EASY

## KDPlay™ Auto-Launch Flash

Plug into Windows or Mac computers to auto launch KDPlay™ software. No installation required!

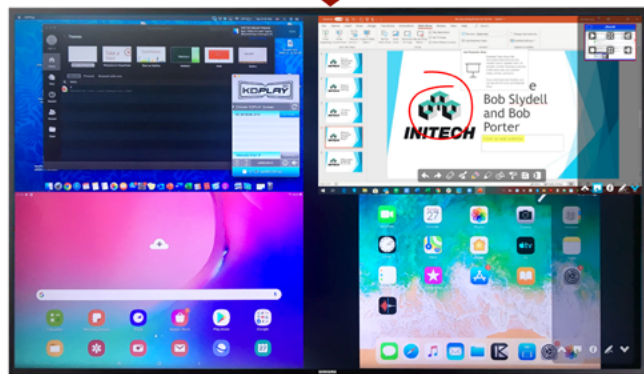
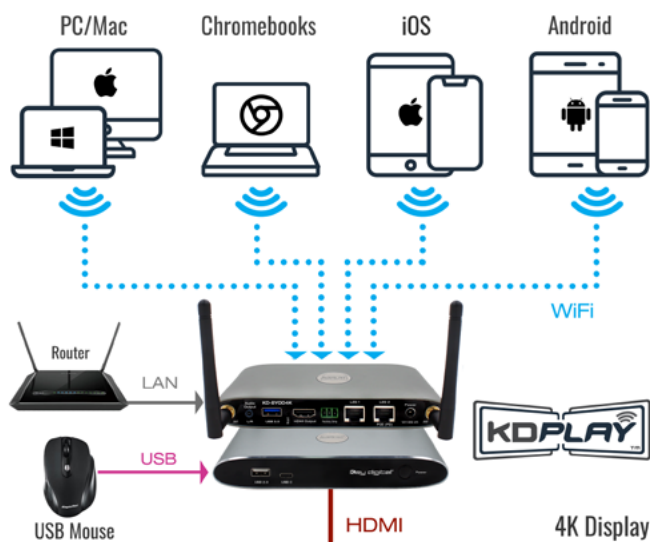
## HOW TO CONNECT & CAST

**Windows PCs or Macs:** Quick Launch with included Auto-Launch USB stick, or with quick KDPlay™ software download

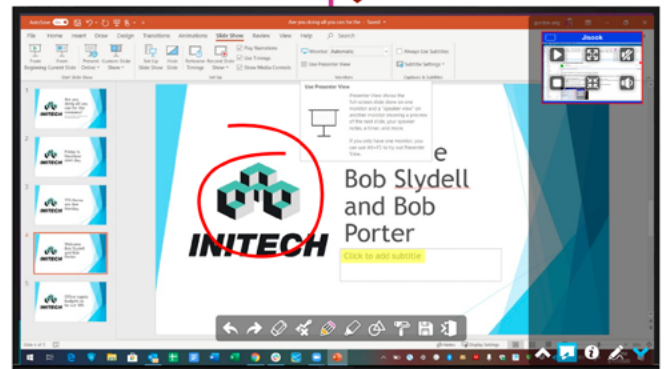
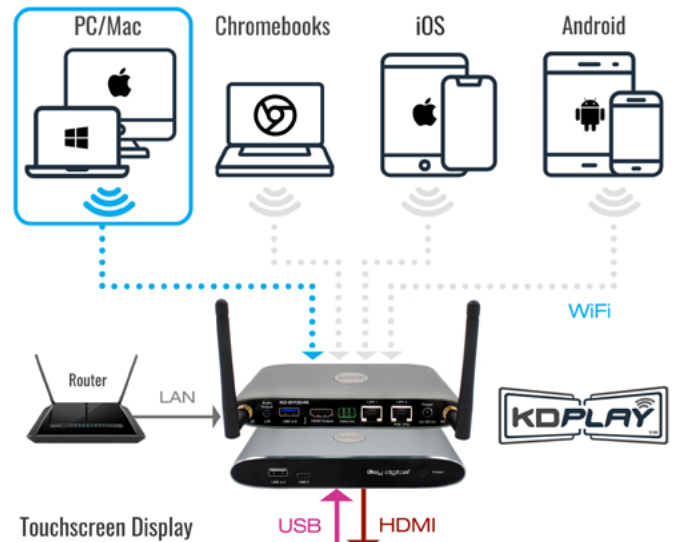
**Chromebooks:** Built-in Chromecast functionality

**iPad / iPhone:** Built-in Screen Mirroring in iOS

**Android Devices:** With KDPlay™ App from Google Play store



MULTI-PRESENTER MODE



FULL SCREEN MODE WITH ANNOTATIONS

# KD-BYOD4K

4K KDPlay Wireless Presentation Gateway for PC, Mac, iOS, Android and Chrome OS devices. Screen Mirroring via LAN or WiFi with built-in Antenna. Full & Multi-Presenter Viewing Modes.



## ADDRESSING MODERN EDUCATIONAL CHALLENGES

- › **Easy Connection:** Up to 16 simultaneous devices may connect, with access always provided to new connecting devices and automatic disconnect of oldest non-casting devices in case of maximum being reached
- › **Extended Monitor:** Feature enables dual display setups such as video conference and presentation content view on side-by-side panels
- › **Content Preview:** Collapsible dock on side of display provides preview thumbnail and name of devices casting via KDPlay app
- › **Touch Screen / Mouse Forwarding:** Connect touchscreen or mouse USB to unit to point and click on casted device
- › **Moderator Management:** Administrator may start & stop device casting via web control page
- › **Web GUI Administration:** School staff can access unit setup, moderator, and security tools on web browser
- › **Audio De-embedding:** Audio of the casted device is de-embedded for ease of integrating with audio amplification and mixing systems



## SMOOTH VIDEO

KDPlay™ delivers glitch-free video up to 4K thanks to internal video optimization.

## MULTI-PLATFORM

User-friendly KDPlay™ app unifies casting from Windows, Mac, and Android. iOS and Chrome OS devices are natively supported with AirPlay and Chromecast.

## INTERACTIVE

Transforms any display or projector into an interactive board with annotation, whiteboard functionality and screen capture features.

## SECURITY SMART

Connection password, casting pins, and data encryption may all be applied with four different security levels.



## LEARN MORE

Interested in integrating KD-BYOD4K or would like to find out where to buy? Contact our Sales Team:

**914-667-9700** or [sales@keydigital.com](mailto:sales@keydigital.com)

**Key digital**®

521 East 3rd Street, Mt Vernon, NY 10553

[www.keydigital.com](http://www.keydigital.com)