

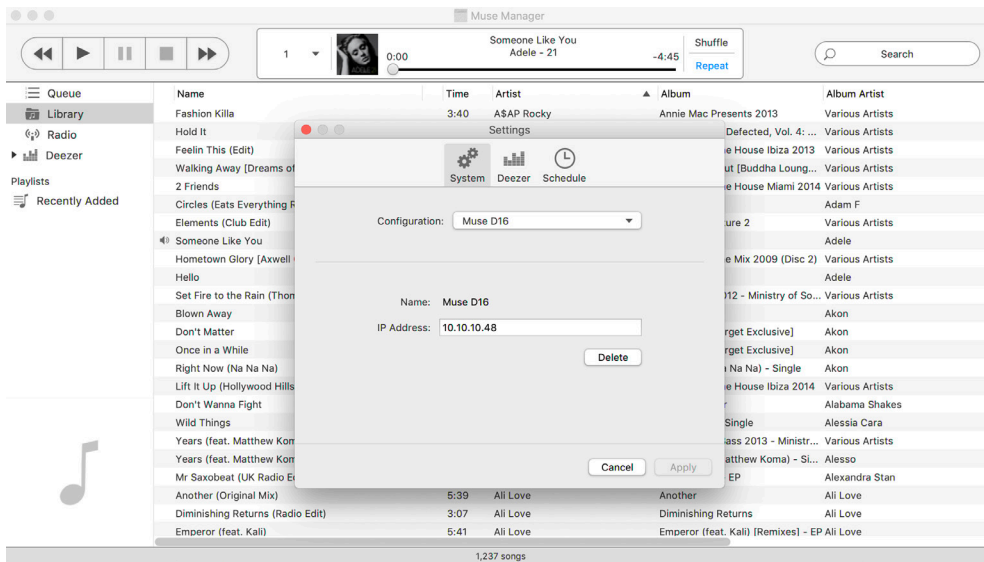
Introduction

Muse Manager is the software management tool for the Muse Audio System range.

Installation

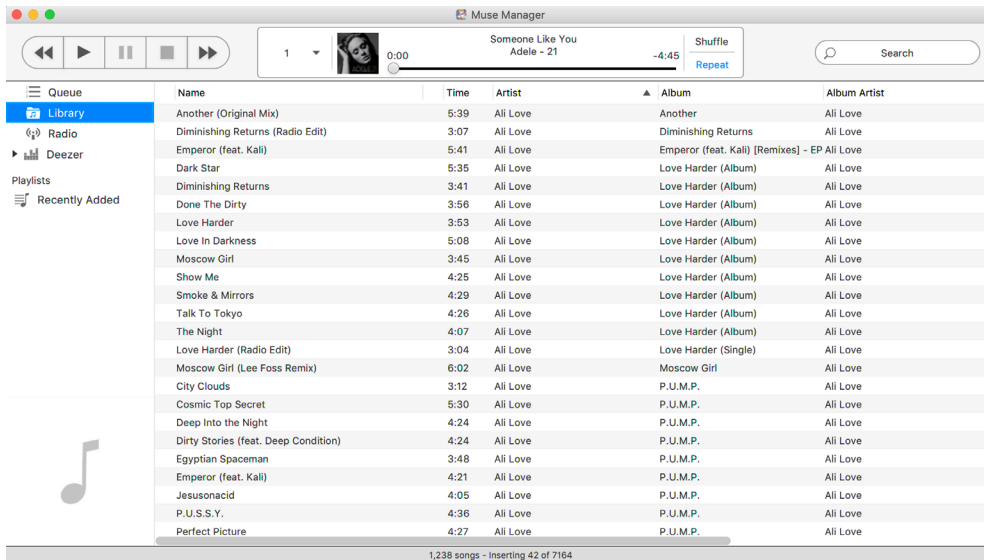
Muse Manager is available for Mac, Windows and Linux and can be installed using the relevant installer.

Muse Manager Setup



- Launch Muse Manager from your Applications folder or Desktop shortcut
- Choose File > Settings
- Add a new configuration by entering a useful name and the IP address of the Muse system
- Select Apply to continue

Importing Content



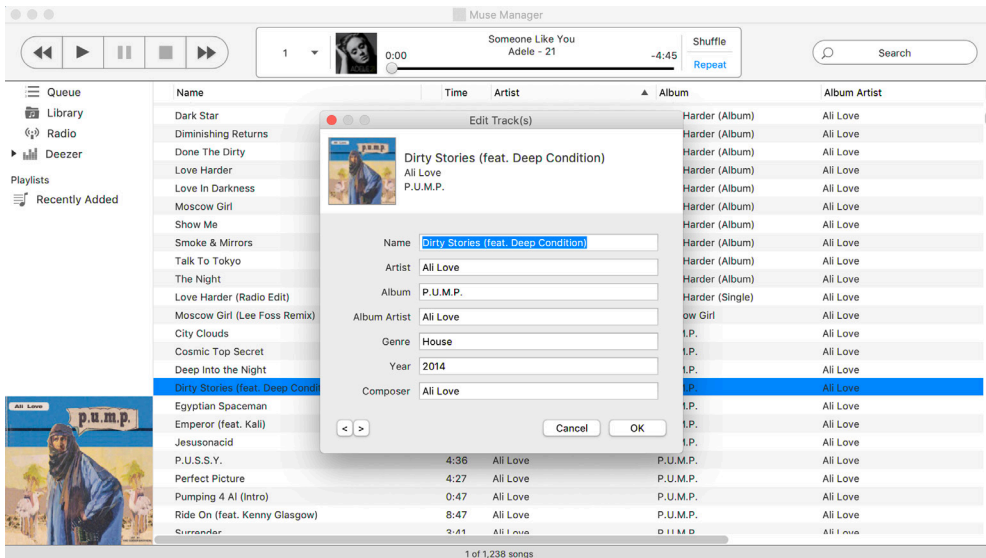
- Choose File > Add Folder or File > Locate a folder or file/s you wish to add to Muse
- OR
- Drag and drop music file/s or folder/s from your computers file system or iTunes directly into the Muse Manager application library window

A status will appear at the bottom of Muse Manager confirming the import is in progress including a track count. The tracks will start to appear in the Muse library once they have successfully been imported.

Muse has inbuilt content quality filtering. If you were to add a duplicate track, i.e. matching track name, artist name and album name, Muse will check to see if the track already imported is “better” or “worse” than the track being added. The “best” track will remain.

The priority is broken down in to primary metadata, secondary metadata, artwork and bitrate.

Editing Metadata



Track metadata can be manipulated using Muse Manager. The changes will take effect as soon as the change is made. Care should be taken when editing multiple tracks at the same time.

- Right click the track/s you wish to edit (or use the shortcut keys) and select Edit
- Change the metadata fields as required
- Press OK to apply the change

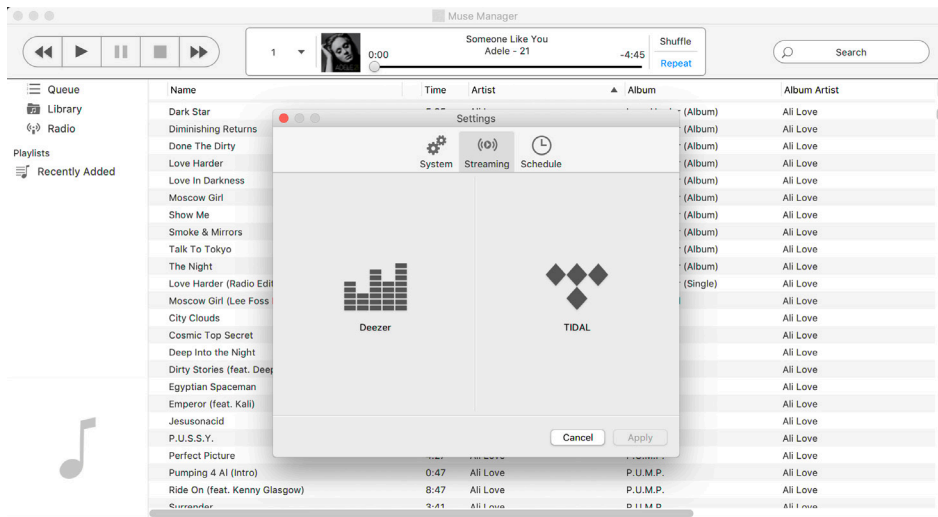
You can use the arrows at the bottom of the window to skip backward and forward through your library.

Cover art can be updated by dragging an image file (PNG or JPEG) into either of the cover art windows, the new cover art will replace the existing.

Music Streaming

To login to your preferred streaming service:

- Choose File > Settings
- Choose the Streaming tab
- Choose either Deezer or TIDAL



- Enter your Deezer/TIDAL username and password then press Login
- You can then choose your preferred streaming quality below

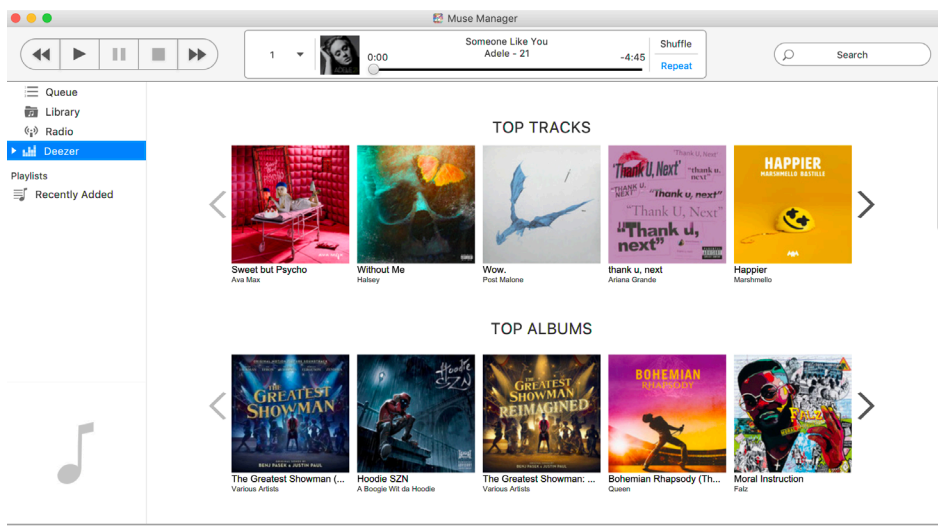
If you do not already have an existing subscription you can create one via the Deezer/TIDAL websites:

- An additional option will appear in the Muse Manager column providing access to Deezer/TIDAL
- Tracks, Albums and Artists can be added to your Muse library or playlists from Deezer/TIDAL by right clicking the desired tracks and choosing either Add to Library or Add to Playlist

OR

- Drag and drop the selected tracks from the streaming windows to either the Muse library or playlists

Please note that although these tracks are now within the library or playlist for convince, at playback they will still require an internet connection. Streaming tracks can be identified by the Deezer/TIDAL logo.



Playlists

To create a playlist:

- Choose File > New Playlist

or

- Right click in the playlist column and choose New Playlist
- Enter a useful name for the new playlist
- Add tracks to the playlist by right clicking the track/s and selecting Add to playlist

or

- Drag and drop track/s from the library or another playlist directly into the playlist you have created

Playlists can be reordered by dragging tracks up and down to change the order.

Playlist Types

If you have logged in to a streaming service on Muse, you will be provided with two options when creating playlists:

Muse Playlist

- These playlists can include both streaming and local tracks, Muse will play the tracks from different sources seamlessly

Deezer/TIDAL Playlist

- These playlists can only include streaming content from Deezer/TIDAL. The playlists will be synced with the Deezer/TIDAL streaming service and appear in the Deezer/TIDAL native app. Streaming playlists can also be created and edited in the Deezer/TIDAL native app and the changes will be reflected in Muse

iTunes Playlists

If you already have playlists in iTunes that you wish to import to Muse for the first time:

- Open iTunes and select the playlist you wish to export
- Choose File > Library > Export Playlist
- Ensure you change the format of the playlist export to XML and then press Save
- In Muse Manager, choose File > Import iTunes Playlist
- Find the XML playlist you exported from iTunes and select Open
- The playlist should appear in Muse Manager

Please note that if the playlist is large it may take a few minutes for the playlist to be fully imported. A status will be displayed at the bottom of the Muse Manager application.

Playback Control

Playback of each stream on Muse can be controlled from Muse Manager:

- Select the stream you want to control or monitor, this can be found to the left of the now playing interface at the top of the window
- Browse the library or playlists and double click a track to start it playing
- The now playing track information will be displayed at the top of the application

Playback controls can be found at the top of the application.

Shuffle

- If enabled tracks in the play queue will play in a random order. If disabled tracks in the play queue will play in their original order

Repeat

- If enabled the play queue will repeat once all the tracks have been played. When disabled playback will stop once all tracks in the play queue have played
-

Exporting

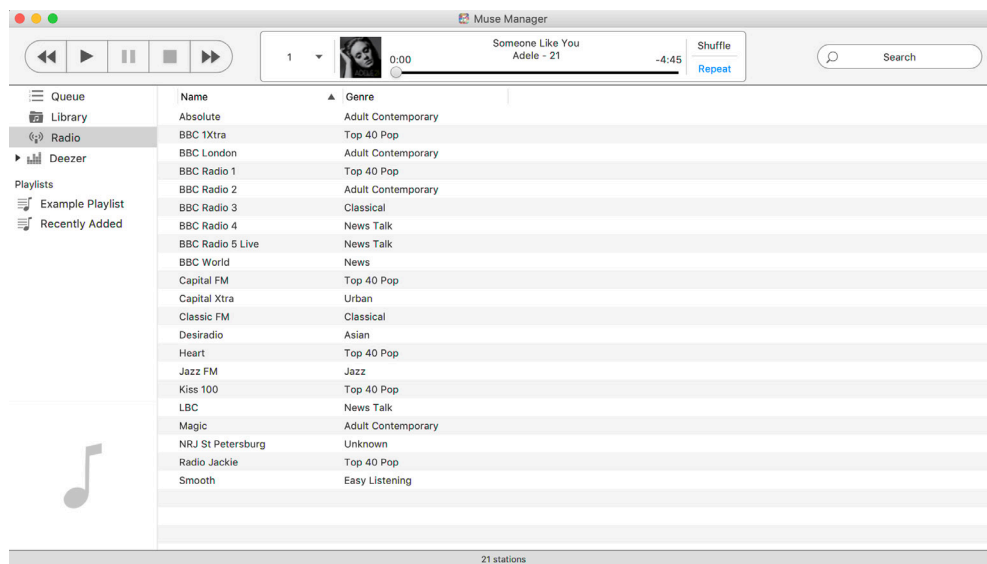
You can export tracks or playlists from Muse should you need a copy of the audio files.

- Highlight the tracks or playlists you wish to export
- Choose File > Export

OR

- Right click the selected tracks/playlists and choose Export
- Choose where you want to export the files to on your computers file system and press Open

Radio Stations



Muse has 21 default radio stations. You can add or edit radio stations by:

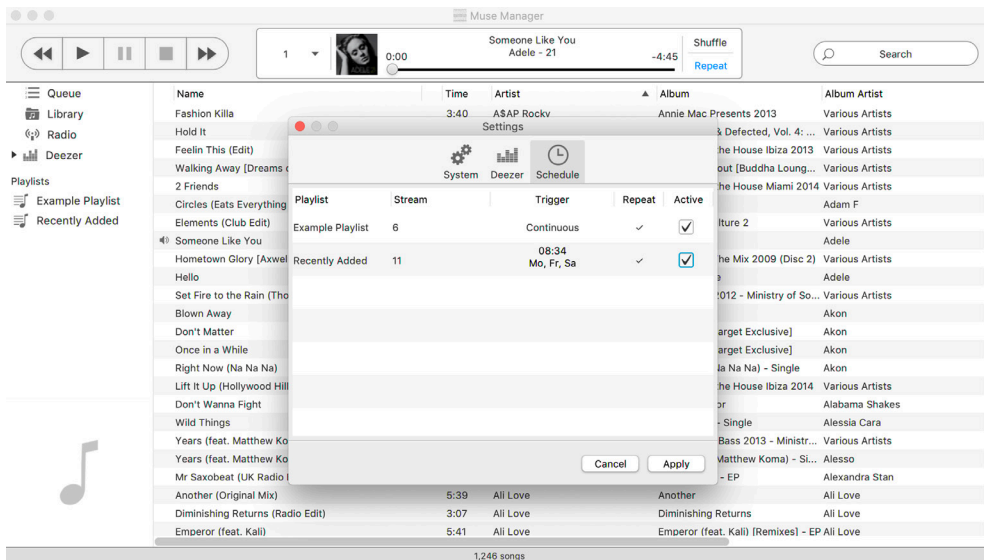
- Right clicking an empty field in the radio station list and choose New Radio Station or Edit
- OR
- Choose File > New Radio Station
 - Complete the required fields and press OK

Scheduling

Muse supports scheduling and these events can be setup using Muse Manager:

- Choose File > Settings
- Choose the Schedule tab
- Right click the schedule list and choose New
- Choose the playlist and stream you wish to trigger followed by the schedule type
- Press Add, you will then be presented with the scheduled event
- Tick the box labeled Active if you wish you enable the scheduled event
- Press Apply

Schedule Types



Continuous

- Continuous events are designed to run all of the time. The specified playlist will start playing on the selected stream once active. Should Muse restart or suffer a power outage continuous streams will automatically trigger once Muse has started up

Scheduled

- Scheduled events are designed to be triggered at a particular time, on either a particular day or multiple days of the week. If you enable the repeat option then the same scheduled event will trigger each week, if you disable the repeat option then the scheduled event will automatically become inactive after it has triggered

Updating Muse Manager

To check you are running the latest version of Muse Manager:

- Choose Help > Check for updates
- If a newer version of software available it will download to your downloads folder for you to install

Should you have any further questions while using Muse please contact us at info@tyba.co.uk or alternatively you can call us on +44 20 3907 6877.