



WiFi IP CAMERA

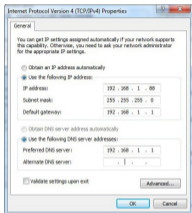
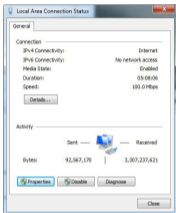
Quick User Guide

1. Prepare for connection

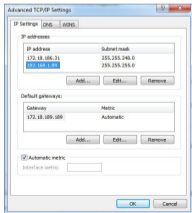
1.1 Network segment setting

Add or set the IPv4 address the same network segment as the IP camera's (Default IP address of IPC is 192.168.1.168), the specific setting steps as follow:

- 1 Set the PC IPv4 address (E.g PC:192.168.1.88)



- 2 To add the same network segment IPV4 address (E.g PC:192.168.1.89)



(Note: The IPv4 address can not be conflicting when you set or add in LAN)

1. Prepare for connection

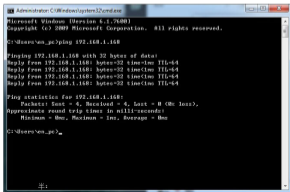
1.2 Ping IP address of IP camera

① Connect the IP camera and PC to the same Local Area Network with a network cable. Turn on the power supply. The method of connection is as the following picture:



② Left click **[Start]** (or use shortcut key "win button+R") → input "cmd" → press "Enter" button of keyboard to pop up the command prompt window → input "Ping***.***.***.***" and then press the Enter key to check the system statistic connection information (For example, the IP address of IP camera is 192.168.1.168, please input "ping 192.168.1.168"). Ping statistics like these means that the signal communication of the PC and IP camera is normal, your IP camera works normally (Refer to Fig 1-06).

Packets: Sent = 4, Received = 4, Lost = 0 <0% loss>



```
Administrator: C:\Windows\system32\cmd.exe
Microsoft Windows [Version 6.1.7600]
Copyright (c) 2009 Microsoft Corporation. All rights reserved.

C:\Users\ven_pc>ping 192.168.1.168

Pinging 192.168.1.168 with 32 bytes of data:
Reply from 192.168.1.168: bytes=32 time=1ms TTL=64
Reply from 192.168.1.168: bytes=32 time=1ms TTL=64
Reply from 192.168.1.168: bytes=32 time=1ms TTL=64
Reply from 192.168.1.168: bytes=32 time=1ms TTL=64

Ping statistics for 192.168.1.168:
    Packet: Sent = 4, Received = 4, Lost = 0 (0% loss),
    Approximate round trip times in milli-seconds:
        Minimum = 0ms, Maximum = 1ms, Average = 0ms

C:\Users\ven_pc>
```

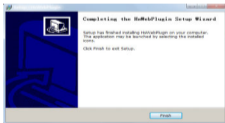
2. Connect to login

2.1 Download and Install WebPlugin

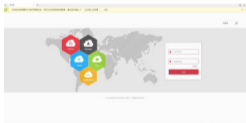
When initially connecting to the IP Camera, you need to download and install the ActiveX plugin. First, open **Internet Explorer** web Browser and enter 192.168.1.168 into address bar. Click "Download" to download the WebPlugin and install. After install successfully, please refresh the web page. The last step is to enter the User name and Password (Highly recommended to modify the user name and password to improve security level when you enter at first time). Pictures show as follows



1




2

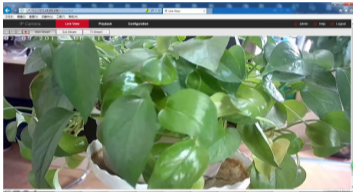


3

2. Connect to login

2.2 Live Preview and configuration

1 Enter user name(default: admin) and password(default: admin) of the IP camera on **Internet Explorer**  browser user interface, you can see the Live preview image.



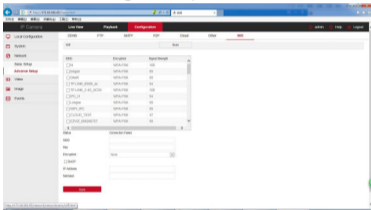
2 Click **configuration** to enter the configuration settings of the device, you can set: local configuration/system/local network/video/image/ event and so on. Users can apply these settings according to the application, to achieve desired performance.



2. Connect to login

2.3 Configure the network

1 Click **【Configure】** to enter the configuration interface, select **【Network】** → **【Advance Setup】** → **【Wifi】** to enter the camera WiFi configuration interface start connecting WiFi hotspot. interface, start connecting WiFi hotspot.



Step 1: Click **【Scan】** to scan all nearby WiFi ;

Step 2: Check the camera to connect WiFi hotspot, in the following **【Key】** enter the WiFi key;

Step 3: Select **【Encryption】** type;

Step 4: Check whether or not DHCP is enabled;

Step 5: Click **【Save】** to complete the configuration. The status shows "The connection is successful".

SPYCLOPS[®]

SURVEILLANCE SYSTEMS

rev. 7/10/2018

866•839•9187

www.MetraHomeTheater.com©

Copyright 2018 - Metra Electronics Corporation