



PoE NVR Kit

Quick Start Guide

Please read the Quick Start Guide fully before using the product and keep it for your records.

Related tools and documents of products, please download from <http://www.metrahometheater.com>.

Statement

Thank you for purchasing our products, if you have any questions about setup or product use, please contact us. This manual is used for PoE NVR and PoE cameras in the kit.

Safety Precautions

1. Please modify default password immediately after the equipment is installed, to avoid unauthorized access.
2. Please do not place and install the equipment in direct sunlight or near heating equipment.
3. Please do not install the equipment in wet, dusty or locations with smoke.
4. Please keep the NVR installed level and secured to prevent the product from falling.
5. Do not drop or splash liquid onto the NVR and ensure that no liquid-filled items are placed on the device to prevent liquid from leaking into the device.
6. Please install the equipment in a well-ventilated area and do not block the vents of the equipment.
7. Please use the equipment within rated input/output range only.
8. Please do not disassemble the equipment without notifying supplier.
9. Please transport, use and store the equipment in climate controlled environment with regulated humidity and temperature.

Disclaimer

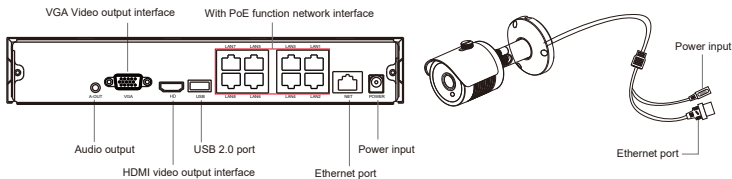
Please pay special attention to the following exclusions or restrictions:

1. If the product is damaged for any of the following reasons, our company shall not be liable for any personal injury or property damage to you or third parties: A. The installation or use of equipment is not installed within the requirements; B. Maintenance of state or public interests; C. Force Majeure; D. Your own or third-party reasons, including but not limited to the use of third-party products, software, components and so on.
2. Our company does not guarantee the equipment for special purposes or use in any expressed or implied way. This equipment shall not be used for medical/safety equipment or other products which can cause life hazards and personal injury applications or dangerous uses of weapons of mass destruction, biological and chemical weapons, nuclear explosion and any unsafe use of nuclear energy or contrary to humanitarian purposes. Any loss or liability arising from such use shall be borne by yourself.
3. This equipment can perceive specific illegal invasion in correct installation and use, but it can not avoid accidents or personal injury and property loss caused by this. In daily life, please be vigilant and strengthen the awareness of safety precautions.
4. We are not liable for any consequential, accidental, special or punitive damages, requests, property losses, data losses and documents losses. In the maximum extent permitted by law, our liability for compensation shall not exceed the amount paid by you when purchasing this product.

Products Appearance Description

NVR Ports: HDMI port, VGA video output port, Audio output port, Ethernet port, USB port, PoE LAN ports, Power Input port.

IP camera Ports: Ethernet Port, Power input port.



Note: Images for instruction use only, your unit may look different but use the same methods.

PoE NVR Kits Quick Installation Guide

This PoE NVR Kits can be easily installed, plug and play and no complex set up needed.

PoE IP cameras are powered on by network cable connected to PoE ports.

1. Install upgraded HDD.

Make sure all power is disconnected before installing. Installation tool: Philips screwdriver.

Notes: Please use surveillance grade hard disk drive only to avoid poor drive performance.

(1) Unscrew the screws on the back and sides of the chassis and remove the cover.



(2) Align the hard disk screw holes to the chassis backplane, and then tighten the screws.

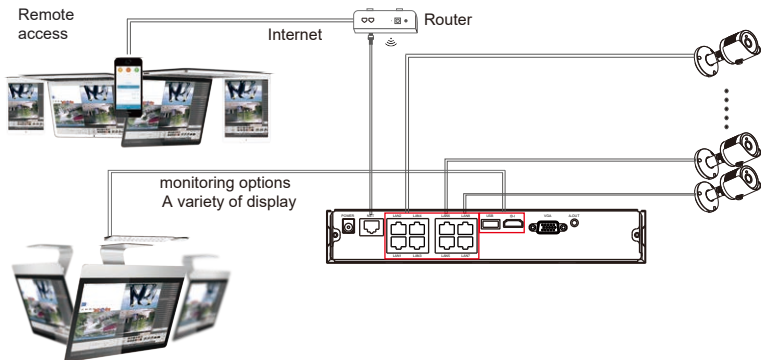


(3) Connect one end of the hard disk power cable and SATA data cable to the motherboard and the other end to the hard disk.



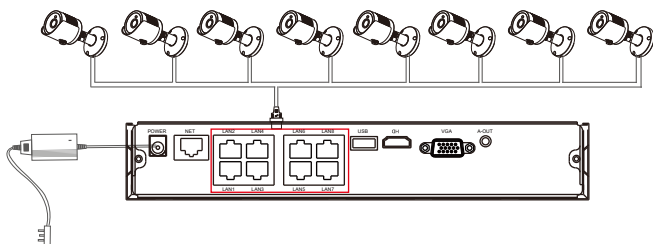
(4) Install the cover and re-attach with screws.





To confirm the PoE package is working properly: NVR connected to the monitor, IPC's connected to NVR through the network cables, NVR plugged in to power, the NVR monitor display shows IPC video, indicating that the device is working properly.

Note: Images for instruction use only, your unit may look different but use the same methods.



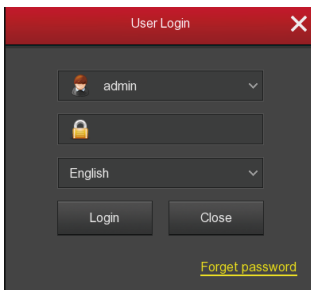
Step 2: Device connection

Power on the NVR and connect it to Network. After connecting IP cameras with the POE port of NVR through network cable, the kit can be setup.

Note: NVR default IP address is <http://192.168.1.88>.

System login

Start up the NVR, right click the desktop and enter the user login interface. Input the username and password, click "Login". System default username : "admin" Password : "12345".



Preview

Enter preview interface after device start up. Preview interface includes date and time of system, and channel names. Login to system, double left click to switch between full screen and multi-screen.

Menu basic operating instructions

1. Enter the menu mode

Login to system, right click to popup shortcut menu.

Left click [Menu], enter the main menu interface.

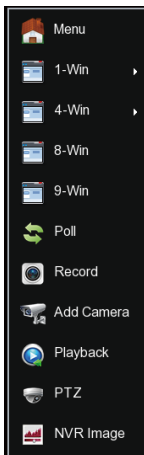
Left click [Playback], enter playback operation interface.

Left click [Record], enter record setting operation interface.

2. Exit the menu mode

Right click to exit the menu mode.

In the menu mode, right click to return to the previous menu (also for other menus).



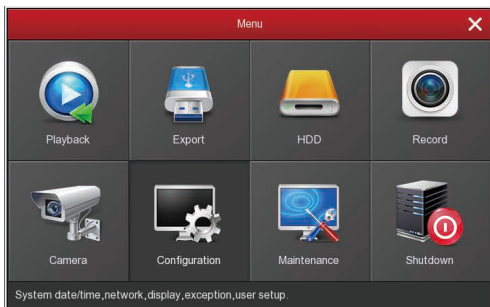
Shortcut menu introduction

Right click to popup shortcut menu, the menu consists with the following three parts:

Preview mode: Select the preview mode in the menu bar you prefer.

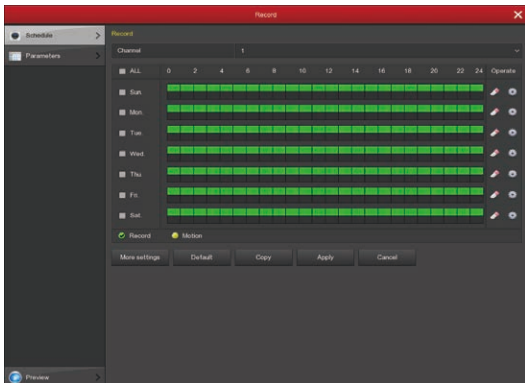
Shortcut menu mode: There is Poll, Record, Add Camera, NVR image, you can click and then enter corresponding menu.

Main menu:It contains [Playback] , [Export] , [HDD] , [Record] , [Camera] , [Configuration] , [Maintenance] , [Shutdown] eight sections.

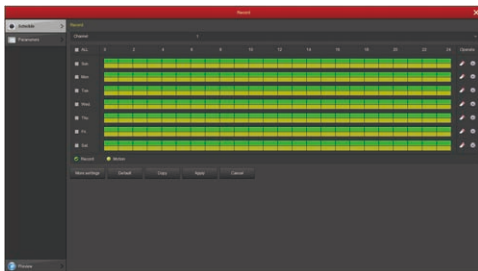


Recording Settings

1. HDD formatting. Make sure the hard disk is detected and works well. (You can check status of HDD from menu "HDD")
2. Enter "Record" interface to set recording from shortcut menu "Record" or main menu "Record". Default setting is all channels are recorded 24 hours a day.

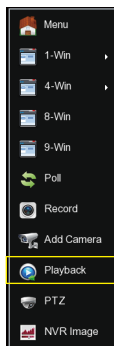


3. Motion Detection Setting, enable "Motion" to activate motion recording, motion sections have no more than 6 time periods each day. If normal record and motion record are overlapped, it will only save the motion records while motion detection comes up.

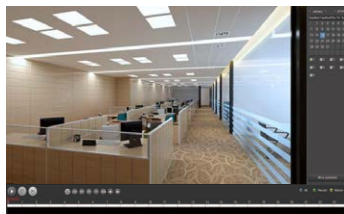


Playback

Enter "Playback" interface by clicking "Playback" from shortcut or main menu, select channels and search the recorded files and playback what you want.

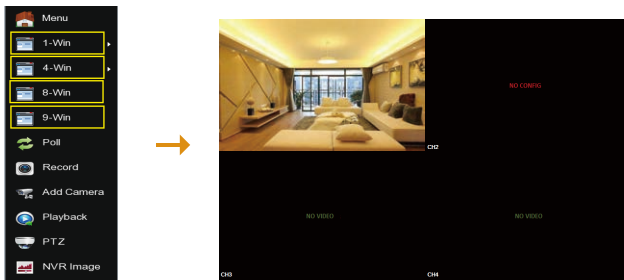


OR

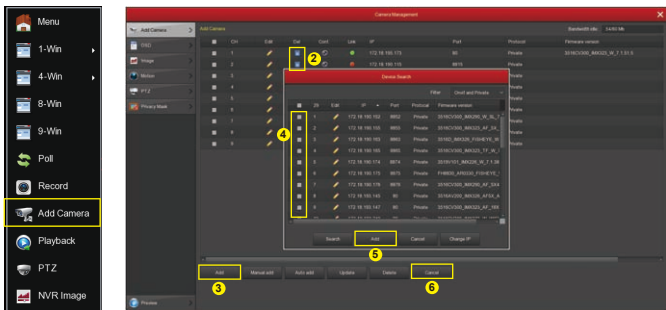


Live View

1. Left click 【1-Win】 / 【4-Win】 / 【8-Win】 / 【9-Win】 in the menu, and enter real time view interface, and you can view one or more cameras at the same time.



2. PoE NVR kit cameras are pre-connected to the NVR, connect all IPC's to NVR, connect the NVR to the monitor, and power it on, then you can view real time preview. If you change the cameras default IP address, you will need to re-add the IPC's to the NVR.



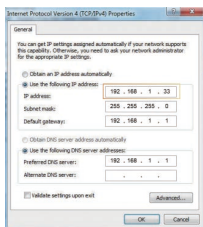
As picture above, left click to enter Add Camera interface with the shortcut menu, or choose "Camera" in the Menu-"Add Camera"

1. Connect the NVR to the power supply, and the IPC connects to the PoE network interface of the NVR through the network cable without any additional power supply.
2. If you have added the device, first delete the device that has been added.
3. Click on the menu button "Add" to enter the Device Search interface, the interface automatically searches for the device and displays the device to search.
4. Click the check box for the device you want to add;
5. Click "Add";
6. Click "Cancel" to return to the previous interface.

Webpage NVR Login

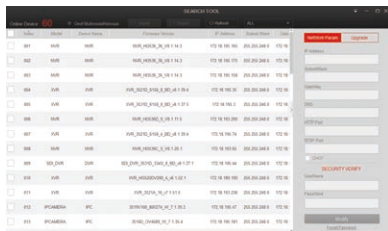
1. Login to NVR on LAN (PC & NVR connected to same router LAN)

1. Make sure the NVR and the connected PC (computer) are in the same segment. If not, please set IP address of your PC to the same segment as the NVR's, for example '192.168.1.33', but it must be different IP as the NVR's. (Note: NVR default IP address is 192.168.1.88).
2. Open IE (Internet Explorer) browser, Select Tools > Internet Options > Safety > customized.
3. Open "Search Tool", double-click the target device from the search result to enter the login interface, or open the IE browser to enter the NVR address: such as http://192.168.1.88/ (If port 80 of the NVR is changed , you need to add the changed port) to enter the login interface.
4. On login interface, login to NVR (Notes: Default user: "admin",password: "12345").
5. Webpage live view for NVR. On "Live Video" interface, click "Play" icon to play video.



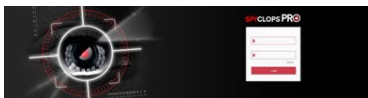
1

(Search Tool)



3

First connection will need to download and install



4



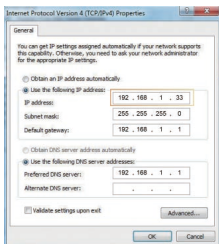
5-1



5-2

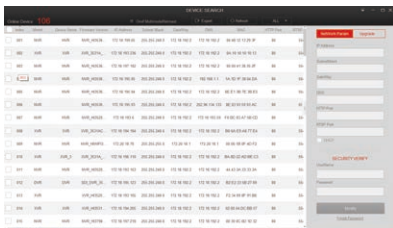
2. IPC LAN Login (the PC and the IPC are on the same router)

1. Connect LAN port with network cable for your PC and IPC. Make sure the devices and the connected PC are on the same segment. If your PC has different segment, please set IP address of your PC to the same segment as the IPC ,for example "192.168.1.104", but it must be different IP as the NVR's and IPC's. (Default IP address of IPC is 192.168.1.168)
2. Open IE browser, Select Tools > Internet Options > Safety > customized.
3. Open "Search Tool", double-click the target device from the search result to enter the login interface, or open the IE browser to enter the IPC address: such as http://192.168.1.100/ (If the port 80 of the IPC is changed , you will need to add the changed port) to enter the login interface, IPC address can be viewed in the NVR "Add Device".
4. On login interface, login to IPC. (Notes: Default user: "admin", password: "admin".)
5. Webpage live view for IPC.



1

(Search Tool)



3

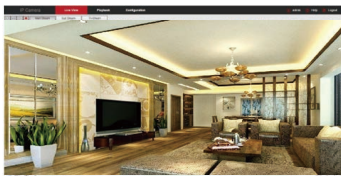
(First connect need download and install plugin)



4-1



4-2



5

Mobile App Access

Download and install SpyclopsPRO on a smart phone or tablet using either option below:

1. On the Android App Store or iPhone App Store enter "SpyclopsPro" search, download and install.
2. Scan the following QR codes to download and install the App.

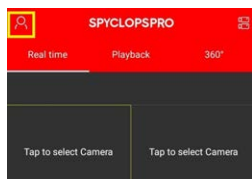


Android

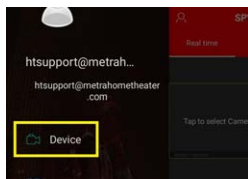


iOS

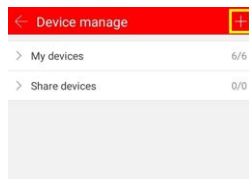
Run the SpyclopsPRO App (new users need to register an account to log in first). The steps to add devices are as follows: To add with LAN Search method follow steps 1 - 9.2 and for QR scan replace 5.1 - 7.1 with 5.2 - 6.2.



1



2



3



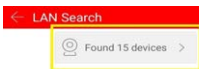
4



5.1



6.1



7.1



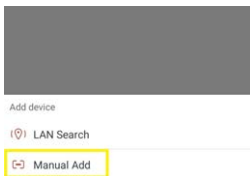
8.1



9.1





9.2



5.2

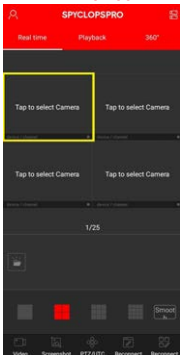


6.2

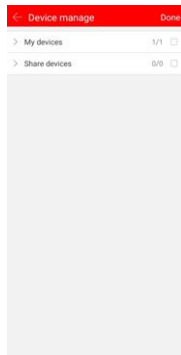
1. Tap  in the upper left menu bar;
2. Tap "Device"
3. Tap  in the upper right menu bar;
4. Tap "Add device"
- 5.1 Tap LAN Search menu
- 6.1 Tap LAN Search button 7.1

- 8.1 Tap the device you would like to add
- 9.1 Enter the username and password and tap Done.
- 9.2 Enter your choice of Device name, select the group you would like to add to and tap "Finish" in the upper right. The device will now be found in "My Devices"
- 5.2 Tap "Manual Add"
- 6.2 Enter Serial Number manually (Or tap scan icon in upper right and scan SN QR code on label), Your choice of Device name, Username, Password and Tap Save.

How to setup app for live



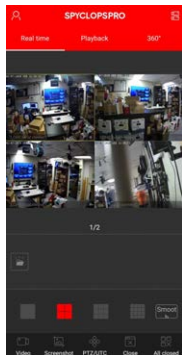
1



2



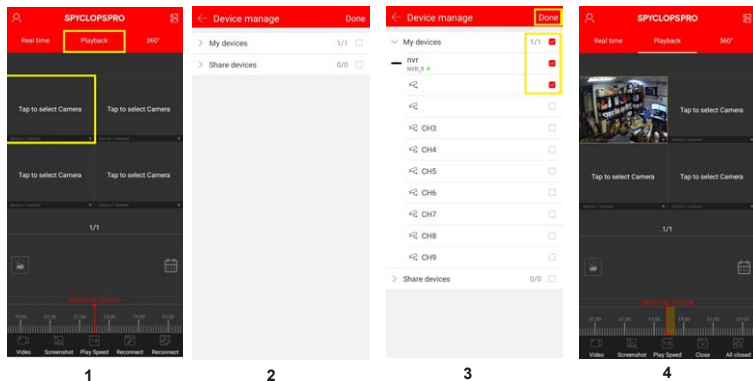
3



4

1. Tap "Tap to select Camera"
2. Tap "My devices"
3. Tap the check box for the NVR/XVR to add all cameras or tap individual cameras and tap "Done"
4. Enjoy your live view cameras!

How to playback recorded videos with app



1. Tap "Tap to select Camera"
 2. Tap "My devices"
 3. Tap the check box for the camera to view recorded videos and tap "Done"
 4. Swipe left or right on the time line to change the recording time view.
- Note: Green bars are recording from schedule and Red is from motion detection.

©2020 Metra Electronics Corporation
460 Walker Street, Holly Hill, FL 32117-2699 Specifications
are subject to change without notice.
All trademarks are the property of their respective owners.
386-255-0234 • www.spyclopsusa.com