



KEY DIGITAL
APP READY

Source & Display Control

4K AV over IP + Key Digital App

KD App Source & Display Control Feature

Key Digital Source & Display Control feature for 4K AV over IP systems controlled by the Key Digital iOS App, enables IR control of popular HDMI source and Display devices without any control system or programming.

System Requirements

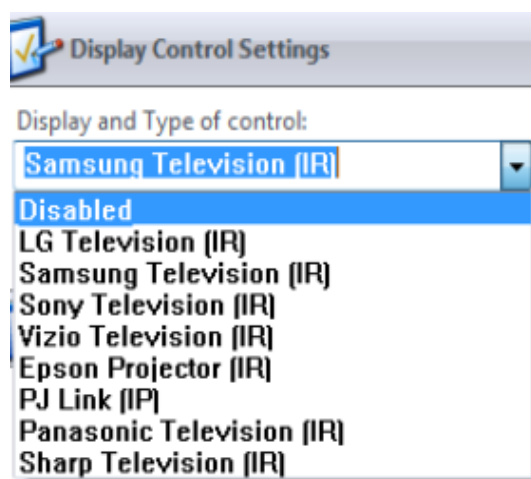
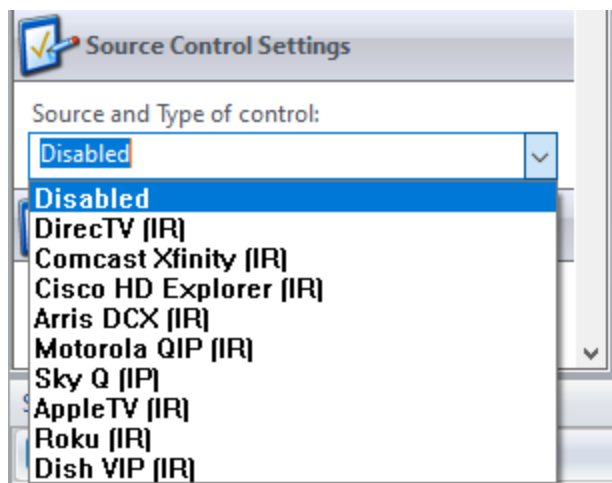
Source & Display may be configured in any Key Digital 4K AV over IP Systems on KD-IP822ENC, KD-IP822DEC, KD-IP922ENC, KD-IP922DEC, KD-IP1022ENC, and KD-IP1022DEC units with firmware v1.56

Supported Devices

Sources	Displays
DirectTV H/HR	LG
Dish Network VIP	Samsung
Comcast Xfinity	Sony
Cisco HD Explorer	Vizio
Arris DCX	Epson PowerLite 2181788
Motorola QIP	Panasonic
SkyQ	Philips Pro
AppleTV	Sharp
Roku	

Setup

Use the latest [Key Digital Management Software Pro](#) to configure Source Control in Encoders or Display Control in Decoders. Use the dropdown menu to choose your supported device.



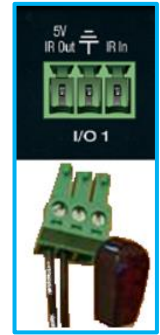
Wiring

Use I/O port 1. Connect the striped wire (IR signal) to pin 1. Connect the solid wire (ground) to pin 2.

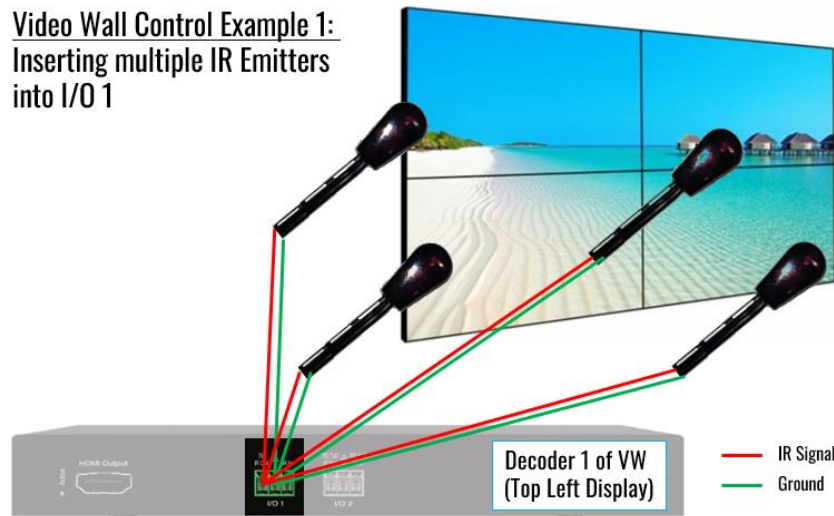
Video Wall Control Wiring

If controlling a video wall, all IR emitters for the video wall displays MUST connect into Video Wall Decoder ID 1 (AKA top-left display). This is necessary because the KD App uses Decoder 1 as the control interface for the video wall.

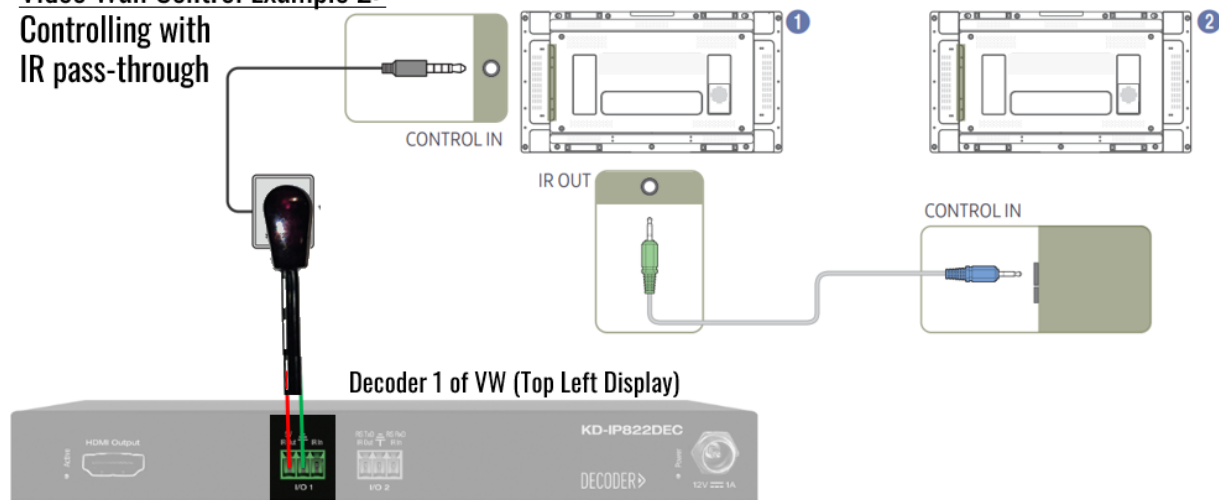
Or, if your Video Wall Panel's feature a IR pass-through, you may connect the emitter from the Video Wall Decoder ID 1 (AKA top-left display) and mount over the monitor's IR sensor, then utilize the IR pass-through wiring provided by the panel's manufacturer.



Video Wall Control Example 1: Inserting multiple IR Emitters into I/O 1



Video Wall Control Example 2: Controlling with IR pass-through



Control

Open the KD App, scan your network, and choose your system to enter the control UI.

Upon selecting Displays (decoders) and Sources (encoders) with Source & Display control enabled, press the desired buttons in the respective control panels at bottom-left and bottom-right of the screen.

You may toggle between the main directional control pad and numerical keypad in the Source Control panel by pressing the numerical button icon:

