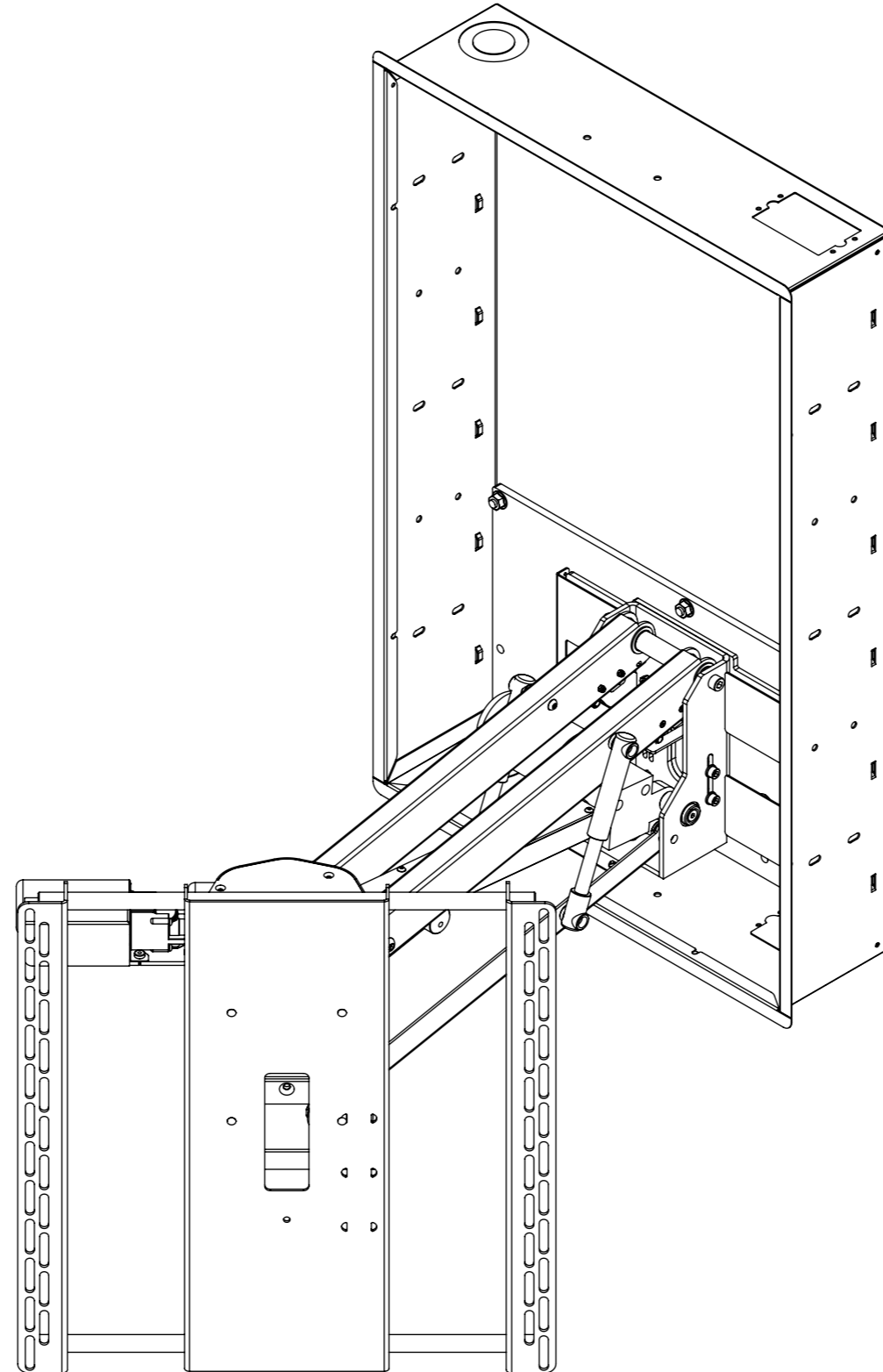


WB-EAD-S

ELECTRIC ADVANCE & DROP WITH SWIVEL



future automation



WB-EAD-S

ELECTRIC ADVANCE & DROP WITH SWIVEL



SPECIFICATION	MEASUREMENTS
Screen Sizes (Approx)	65"-80"
Maximum Weight Capacity	60Kg (132lb)
Depth From Wall	46.5mm (1 13/16")
Maximum Extension From Wall	455mm (17 7/8")
Maximum Drop from In Position	537mm (21 1/8")
Packaging Dimensions	840 x 750 x 270mm (33 1/16" x 29 1/2" x 10 5/8")
Shipping Weight	25Kg (55lb)
Movement Type	Motorised
Power Supply Required	110V - 240V AC
Power Consumption Max.	120W
Power Consumption Standby	3W
Mounting Patterns Supported	VESA 400X400, 400X300 VESA 300X300 300X200 VESA 200X200
Control Options	IR Remote, RS232, Contact Closure
Product Options / Features	Specific B&O and Loewe mounts / adapters, Custom RAL paint finishes
Package Contents	Mechanism, IR remote control, Control box
Marine Suitable	No

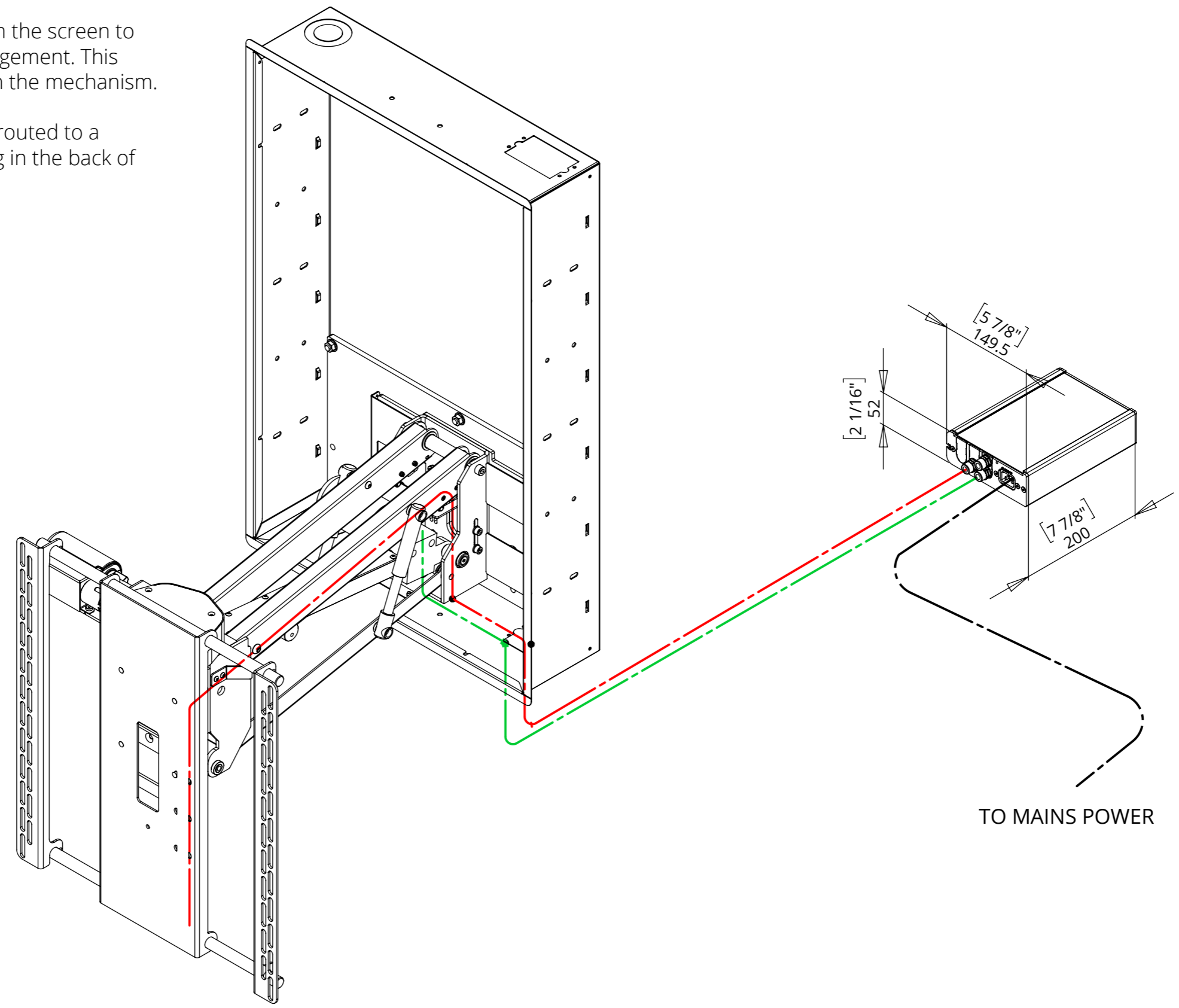
WB-EAD-S

ELECTRIC ADVANCE & DROP WITH SWIVEL

CABLE ROUTING

The EAD's mounting allows for cables from the screen to be fed through the integrated cable management. This allows the cables to be stowed tidily within the mechanism.

Screen and Mechanism cables should be routed to a control box behind the wall via an opening in the back of the wall or a conduit leading to it.

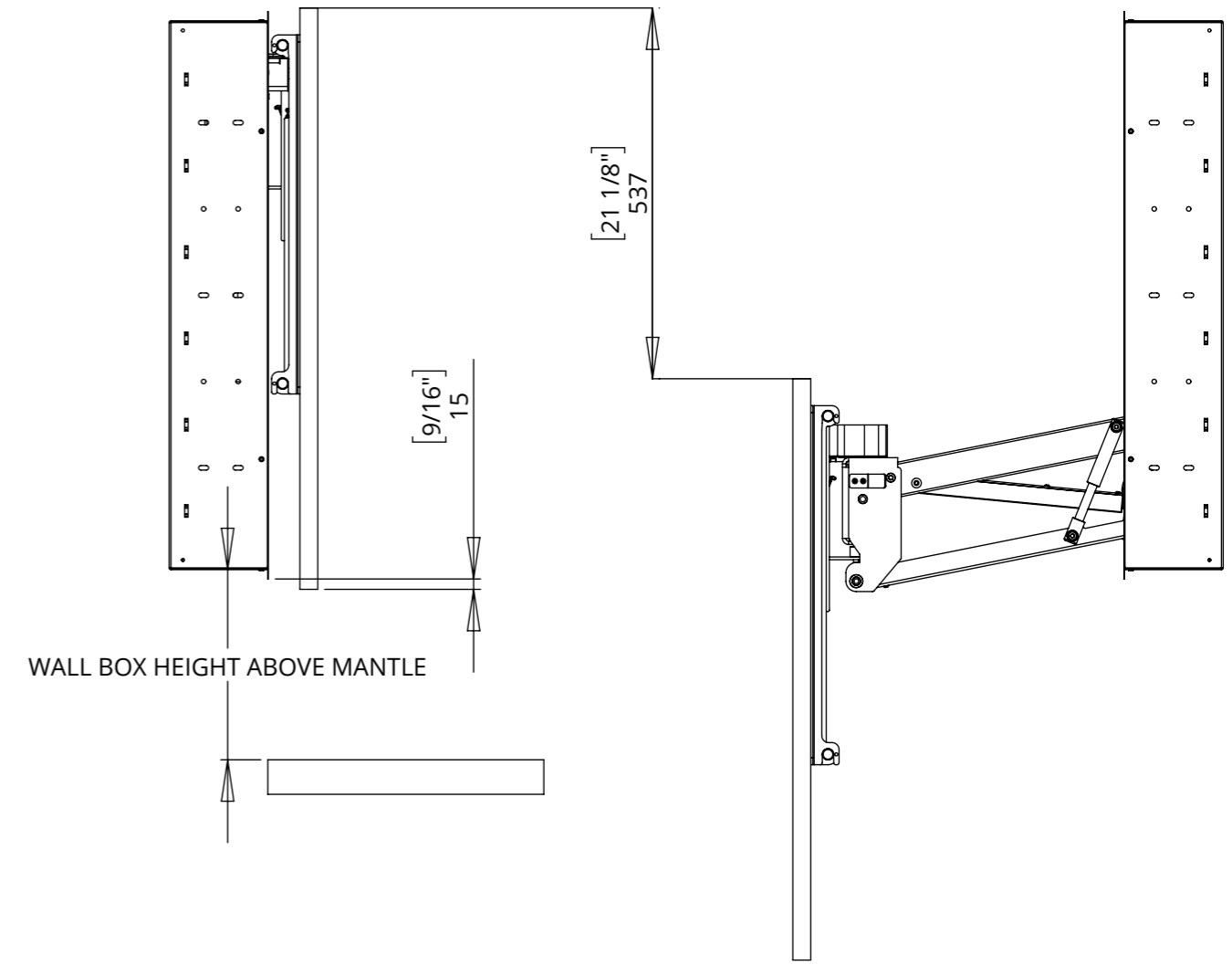


WB-EAD-S

ELECTRIC ADVANCE & DROP WITH SWIVEL

POSITIONING AND MOVEMENT DETAILS

The graph below gives an approximation of the MINIMUM distance between the bottom of the wallbox and the top of the mantle. The graph assumes the bottom of the screen sits 15mm (9/16") below the bottom of the wall-box trim.

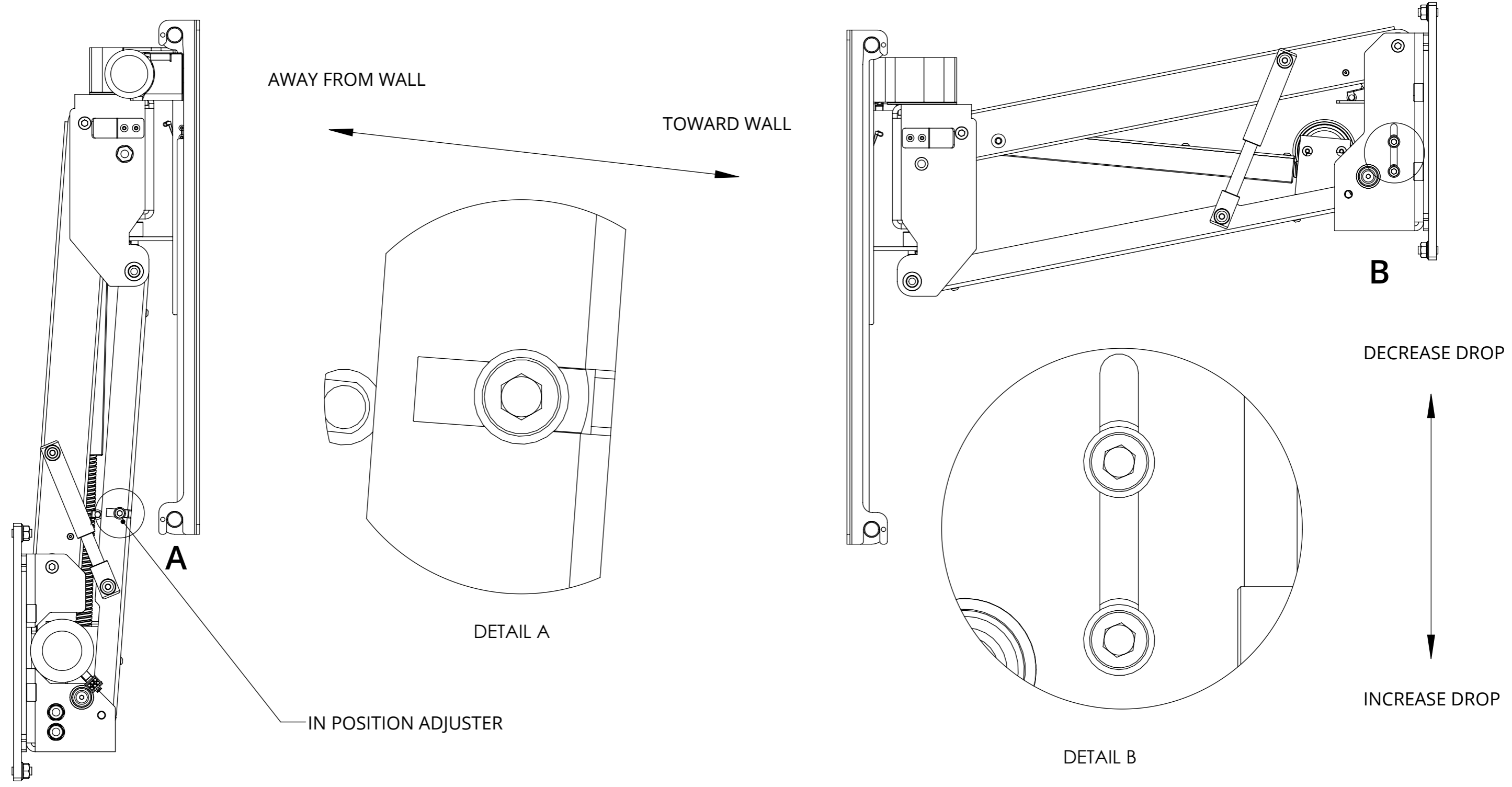


WB-EAD-S

ELECTRIC ADVANCE & DROP WITH SWIVEL

POSITION ADJUSTMENT

The EAD can be adjusted to fine tune the up and down positions. Refer to instructions for more information on switch adjustment.

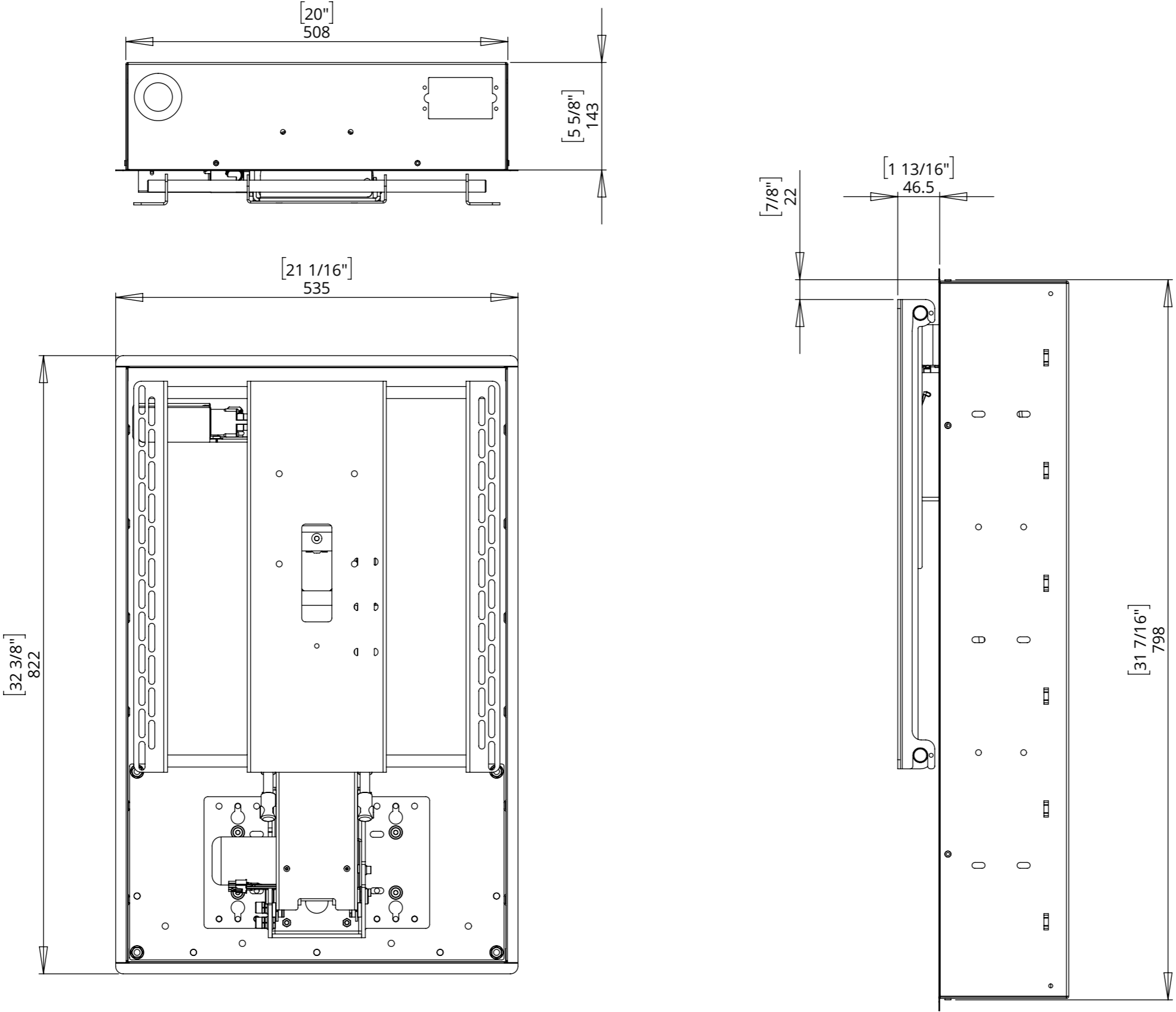


WB-EAD-S

ELECTRIC ADVANCE & DROP WITH SWIVEL



GENERAL DIMENSIONS - IN



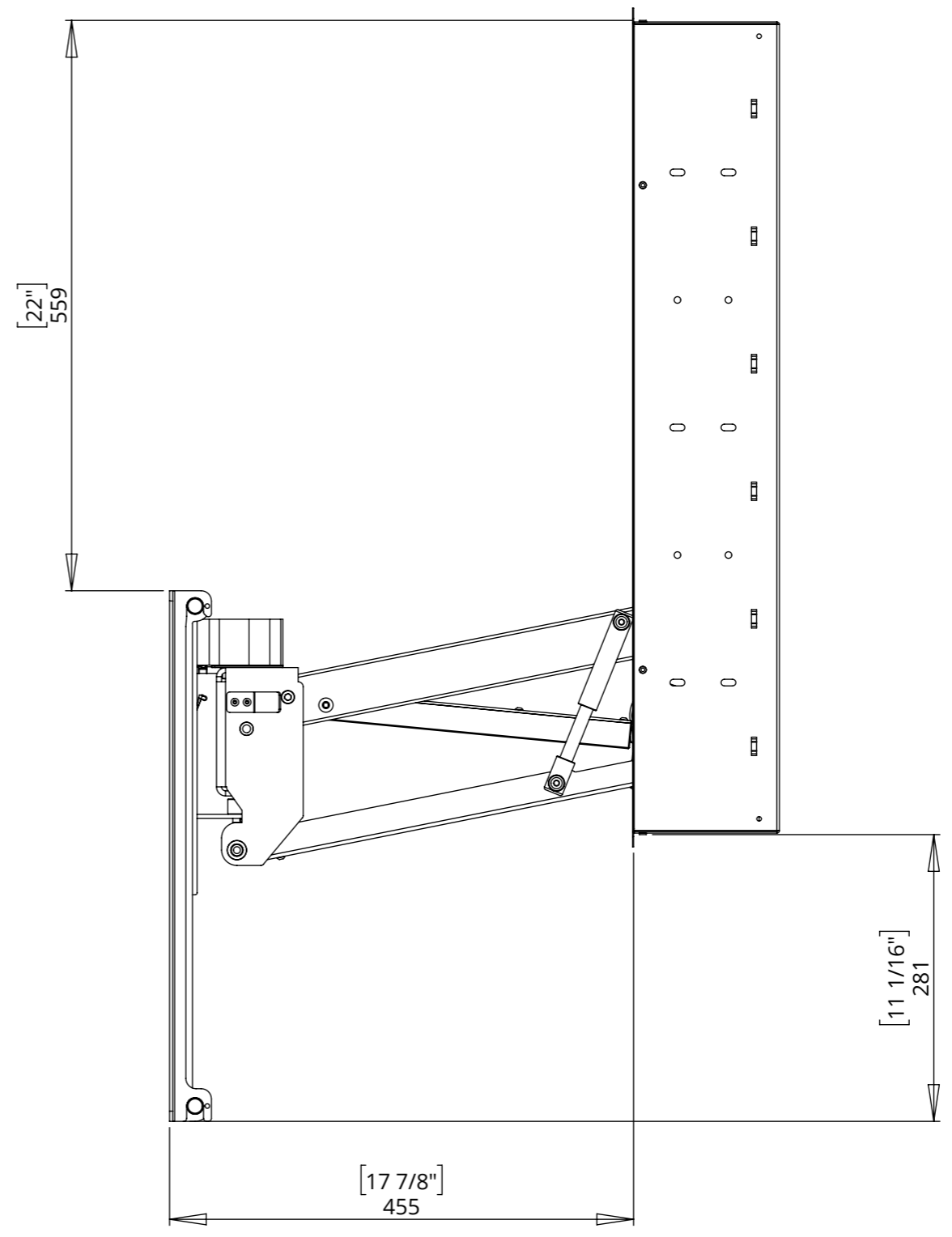
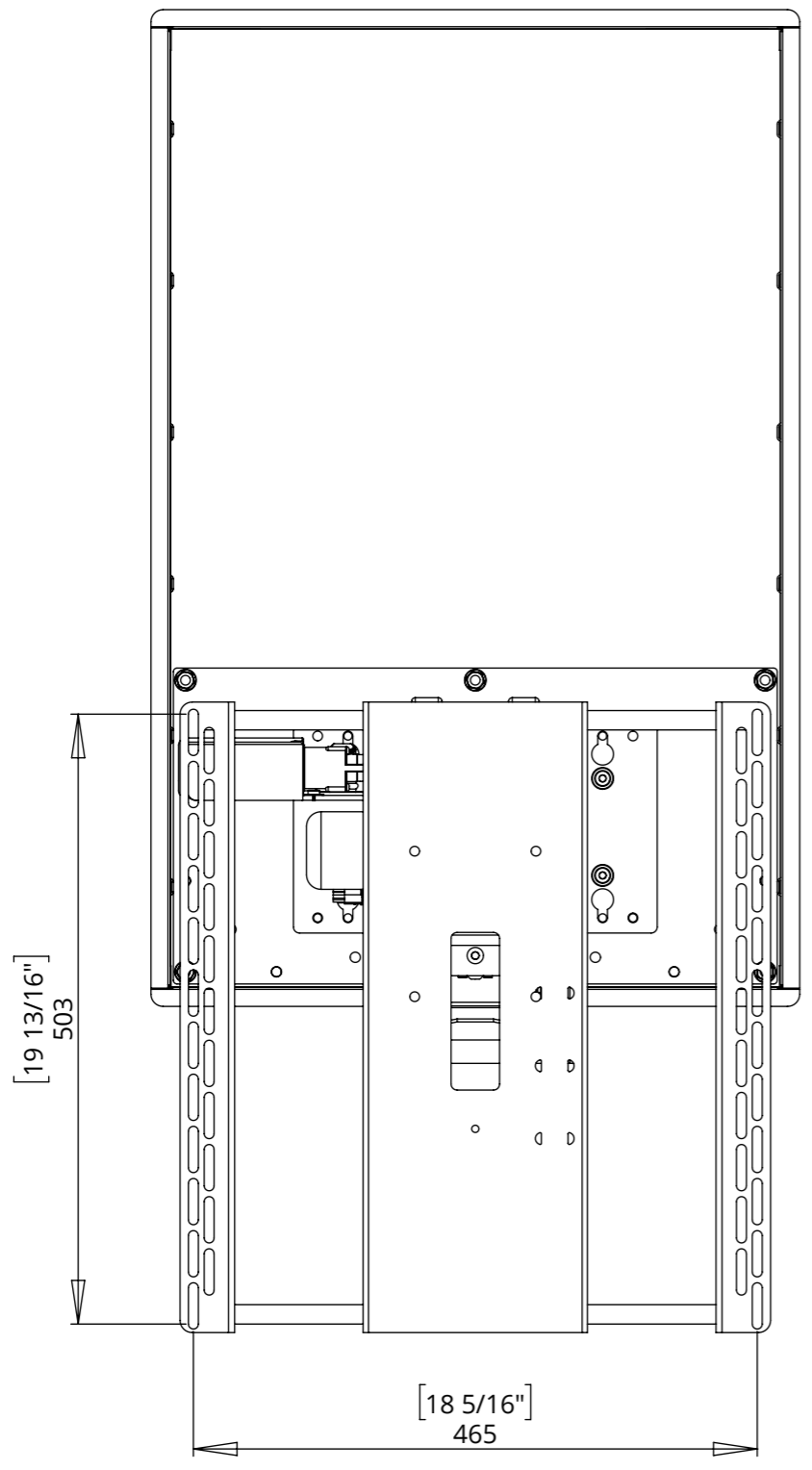
WB-EAD-S

ELECTRIC ADVANCE & DROP WITH SWIVEL



future automation

GENERAL DIMENSIONS - OUT



WB-EAD-S

ELECTRIC ADVANCE & DROP WITH SWIVEL



SWIVEL ANGLE

Positions can be preset to allow mechanism to come out and swivel to a certain angle up to 45 degrees in either direction. The below views show the maximum swivel angle achievable using a mantle depth of 6"

