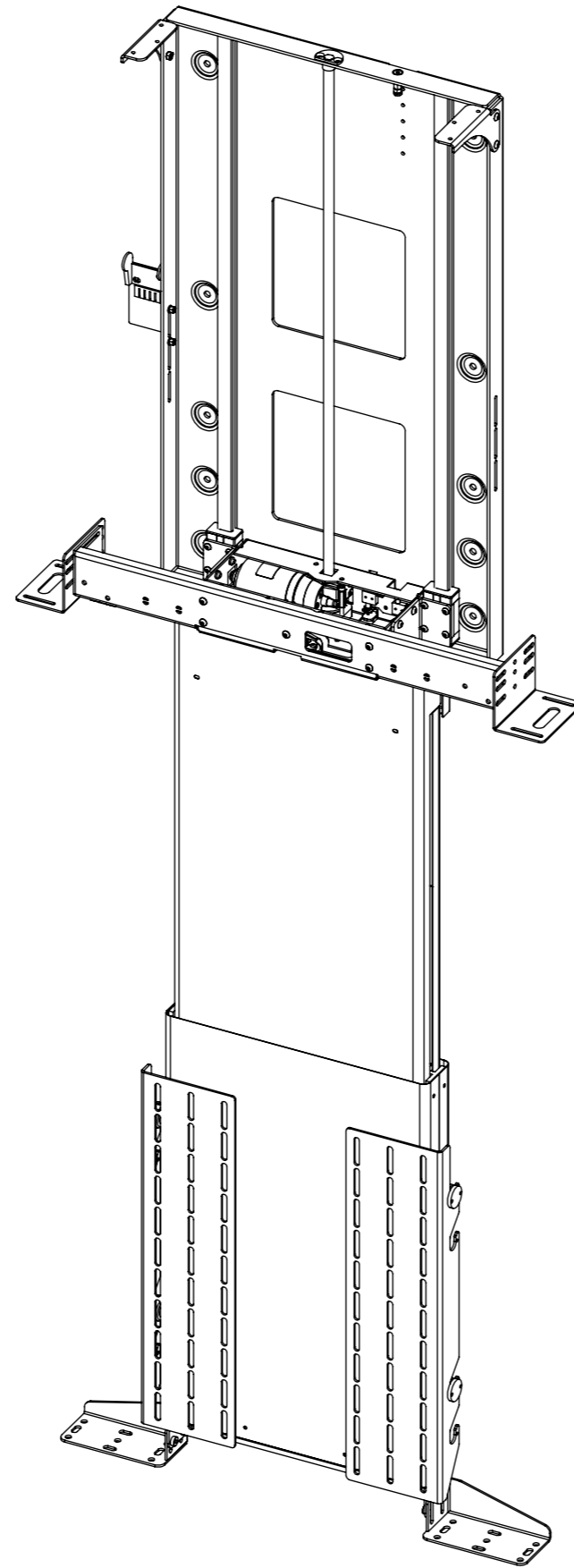


I-LSM-TU-FP-7

INVERTED LIFT SYSTEM MEDIUM WITH TELESCOPE



future automation



I-LSM-TU-FP-7

INVERTED LIFT SYSTEM MEDIUM WITH TELESCOPE



future automation

SPECIFICATION	MEASUREMENTS
Maximum Screen Height	920mm (36 1/4")
Maximum Lifting Capacity	30Kg (66lb)
Maximum Lift Distance	1489mm (58 5/8") from top of screen to cabinet top
Internal Cabinet Height	1060mm (41 3/4")
Decibel Rating	52dB
Movement Type	Motorised
Power Supply Required	110V - 240V AC
Power Consumption	250 - 500W
Power Consumption Standby	3W
Mounting Patterns Supported	VESA 400, 300, 200 W x 400, 300, 200 H
Control Options	IR Remote, RS232, Contact Closure
Product Options / Features	Specific B&O and Loewe mounts / adapters, Custom RAL paint finishes
Package Contents	Mechanism, IR remote control
Marine Suitable	No

I-LSM-TU-FP-7

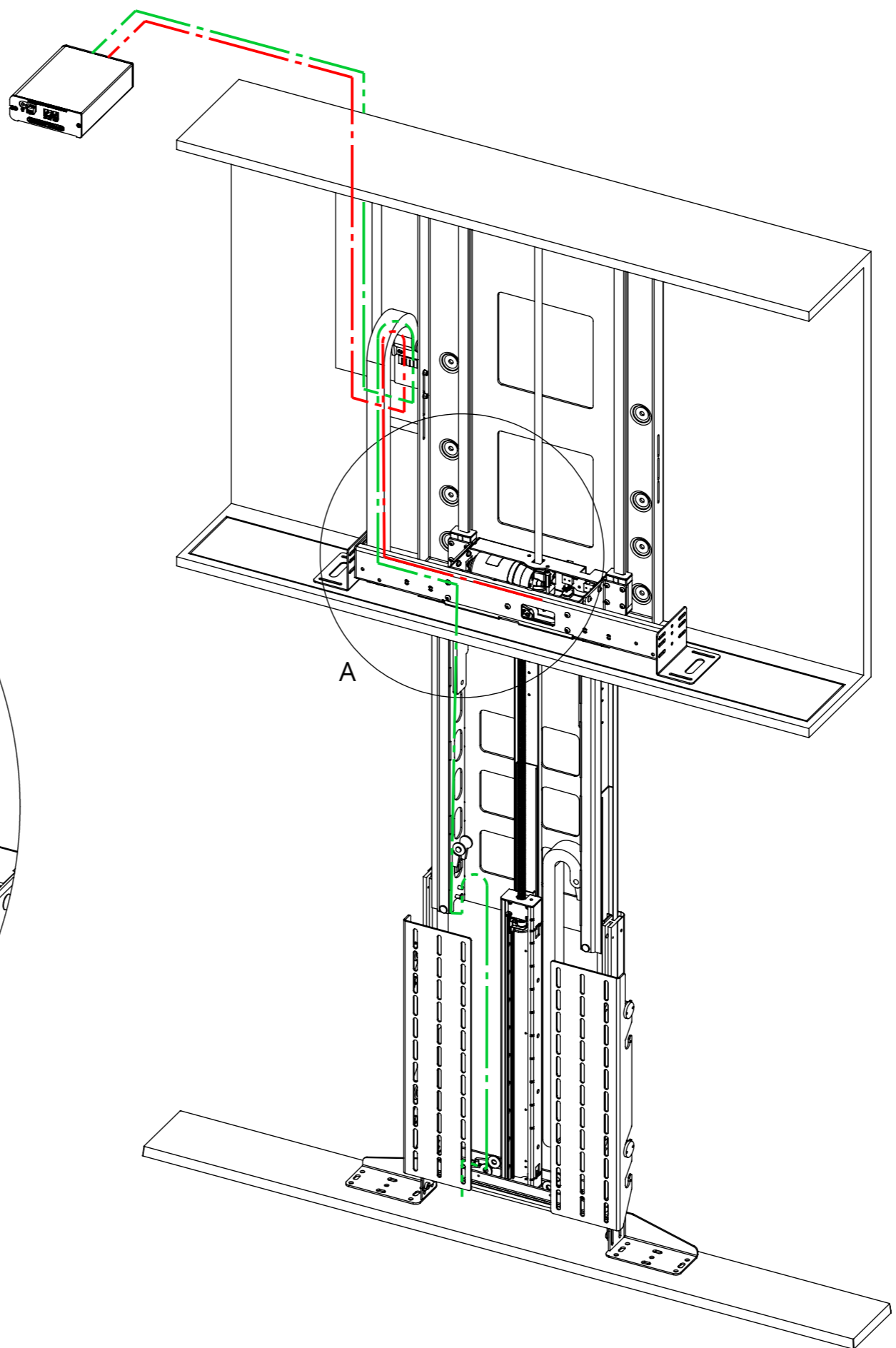


INVERTED LIFT SYSTEM MEDIUM WITH TELESCOPE

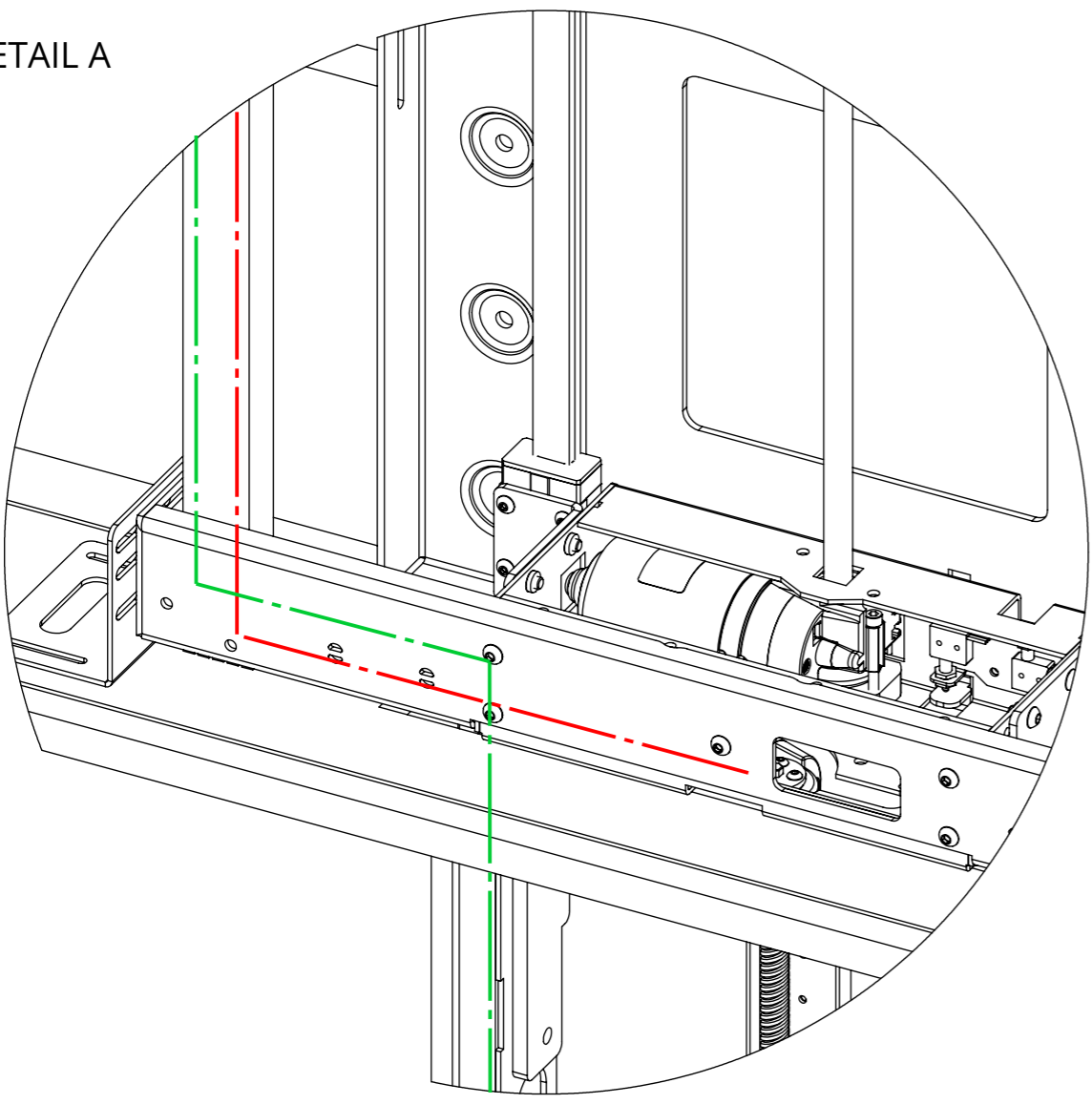
CABLE ROUTING

Screen Cables enter the top of the Telescopic Unit and are fed down through the Cable Track within. This can be accessed by removing the two front covers of the Telescopic Unit. The cables then pass through the LSM Beam and into the LSM Cable Track. Cables must be routed carefully to prevent any interference with the LSM beam as it operates.

Screen and Mechanism cables should be routed to a control box outside of the cabinet via an opening in the back of the cabinet or a conduit leading to the bottom.



DETAIL A



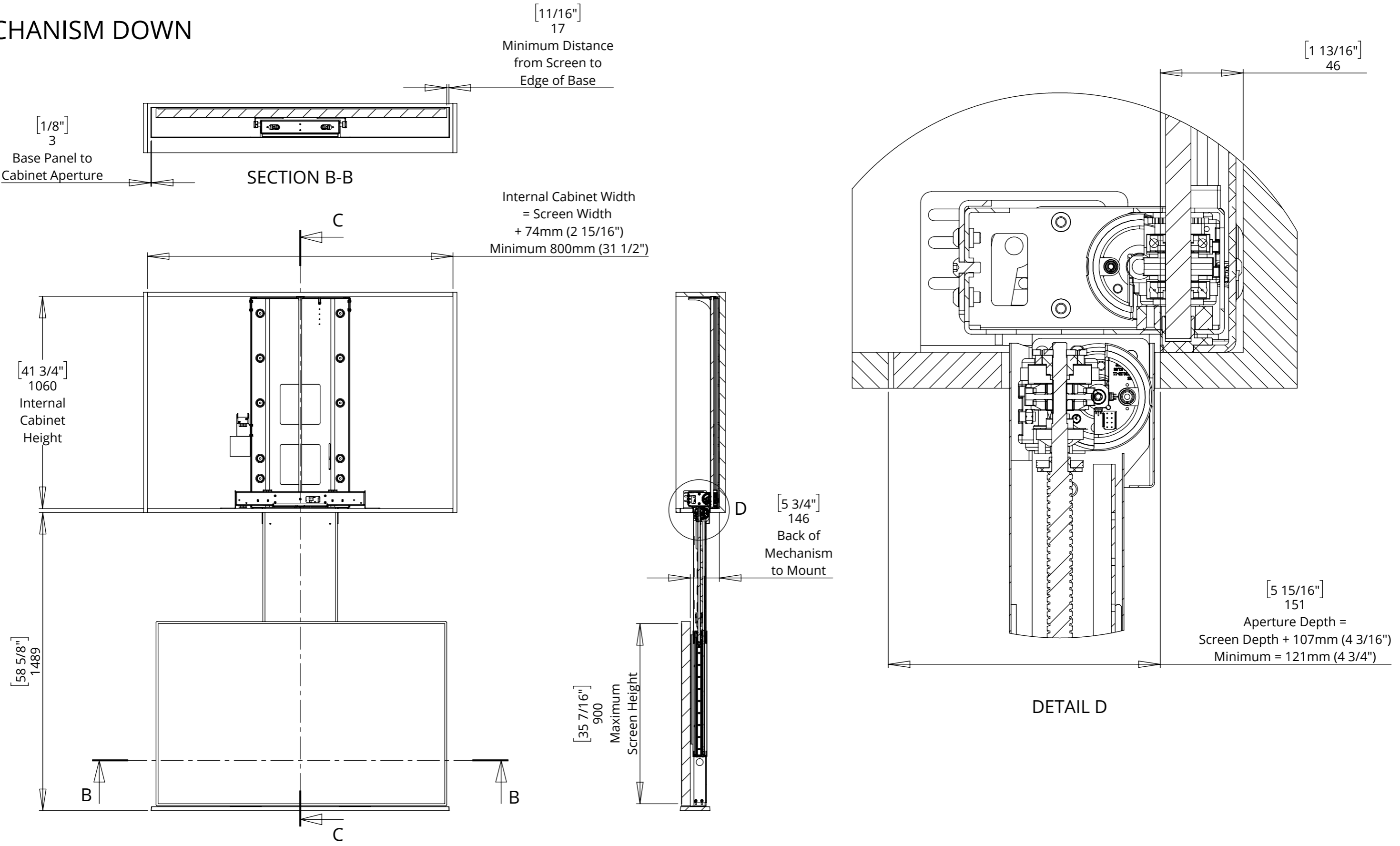
I-LSM-TU-FP-7



future automation

INVERTED LIFT SYSTEM MEDIUM WITH TELESCOPE

MECHANISM DOWN



I-LSM-TU-FP-7

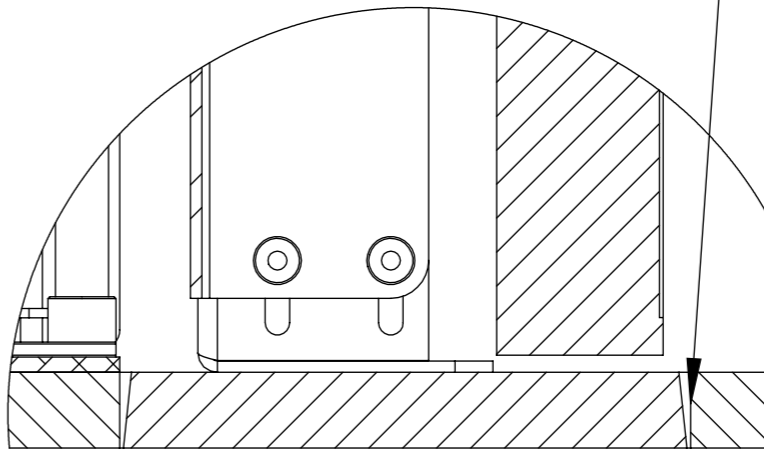
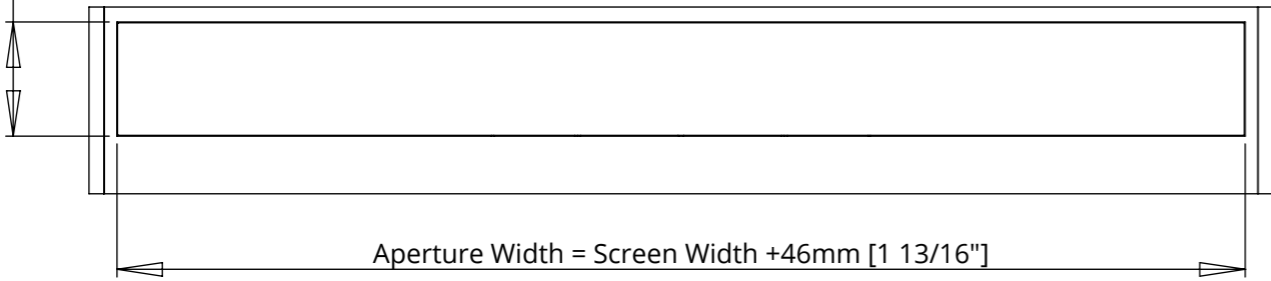


future automation

INVERTED LIFT SYSTEM MEDIUM WITH TELESCOPE

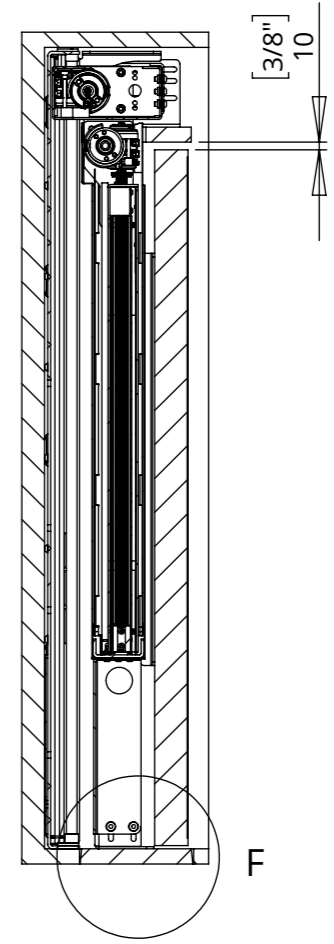
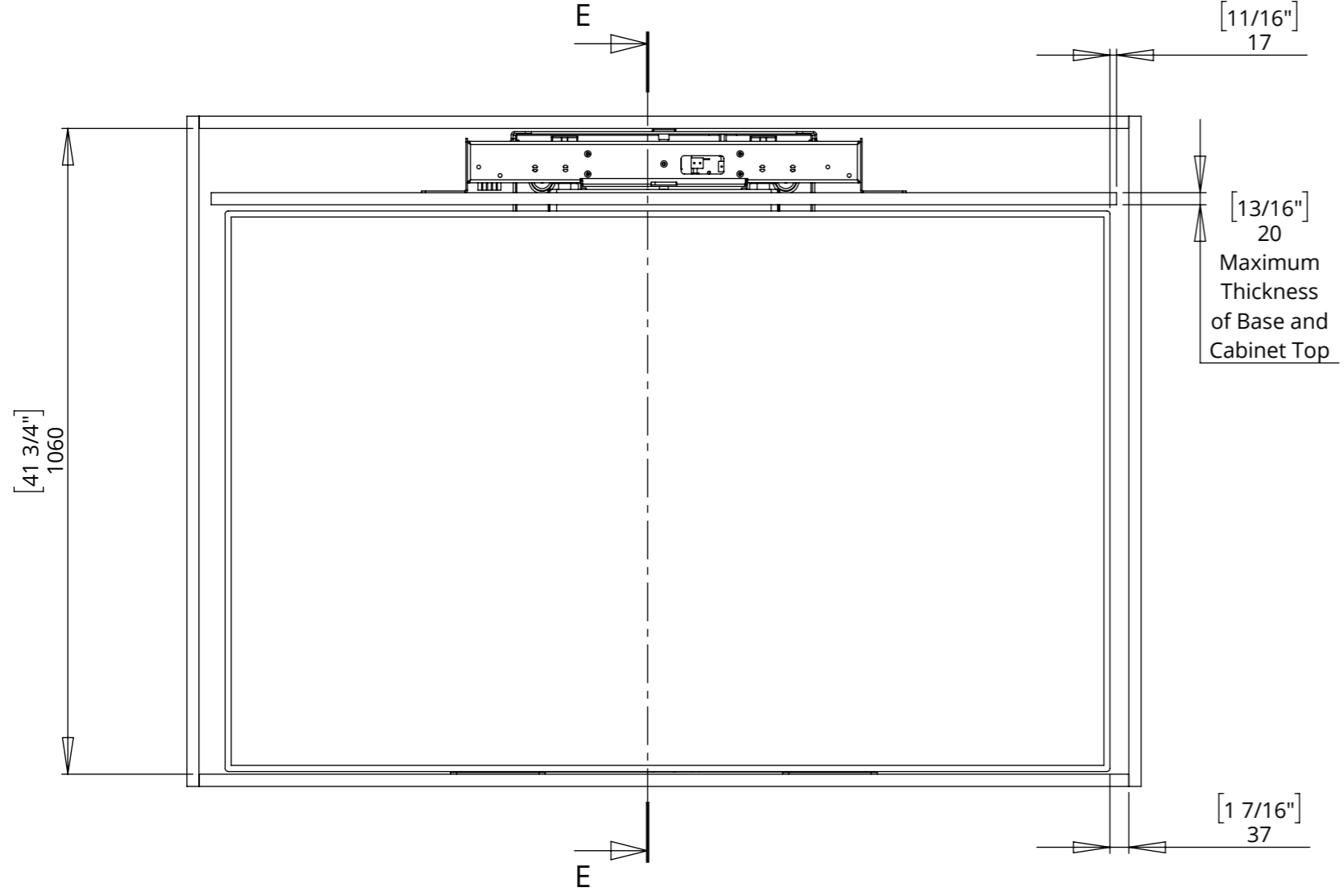
MECHANISM UP - IN CABINET

Aperture Depth =
Screen Depth + 107mm (4 3/16")
Minimum = 121mm (4 3/4")



Shown with tapered Box Enclosure Lid in square Cabinet Aperture. A tapered Cabinet Aperture can be used to improve the fit.

DETAIL F



SECTION E-E

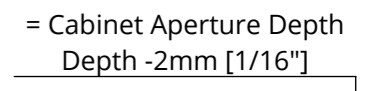
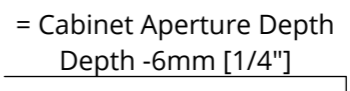
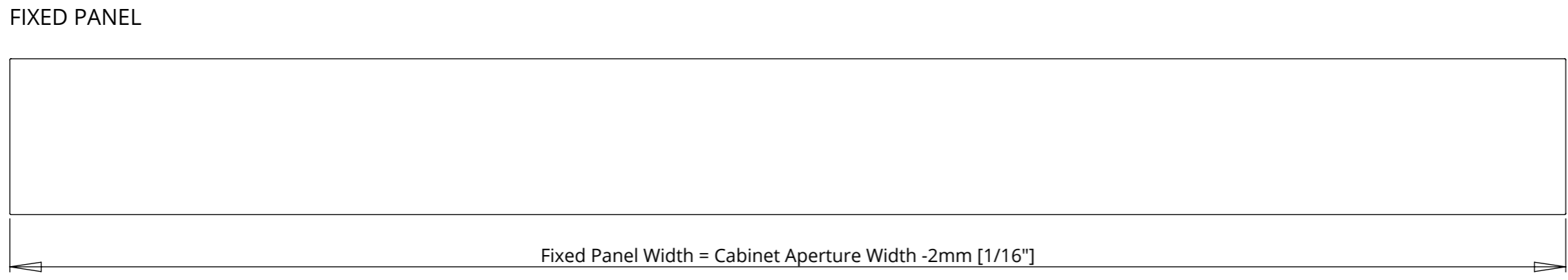
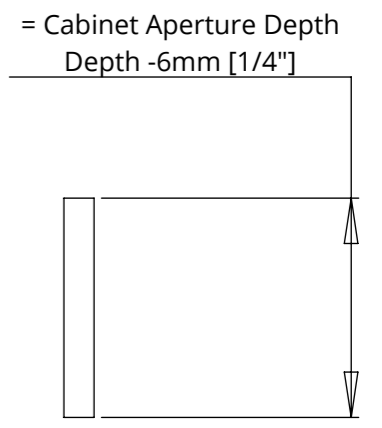
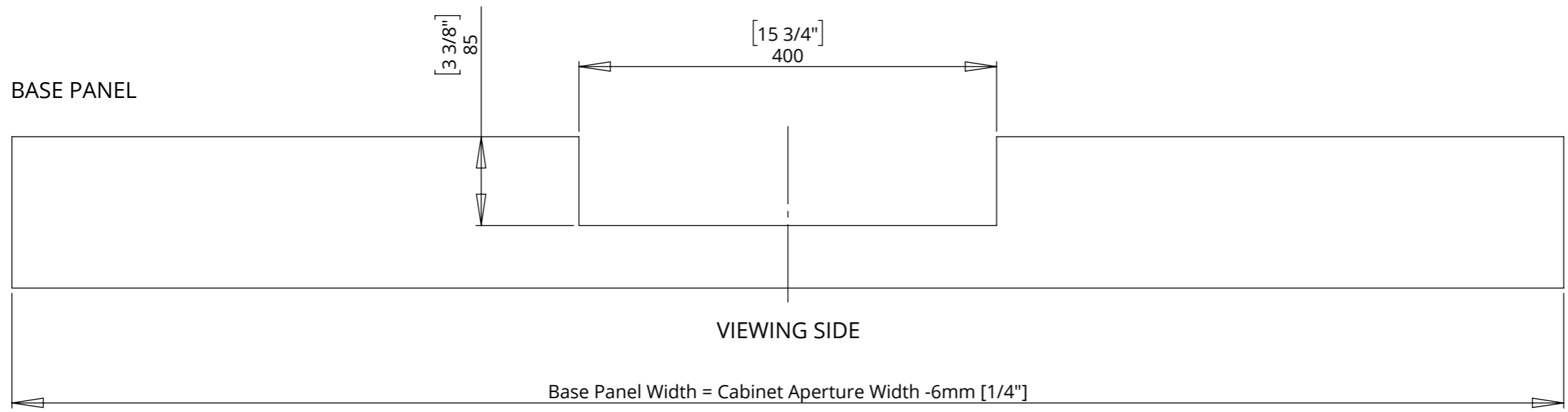
I-LSM-TU-FP-7



future automation

INVERTED LIFT SYSTEM MEDIUM WITH TELESCOPE

BASE PANEL AND FLAP PANEL DETAILS



I-LSM-TU-FP-7

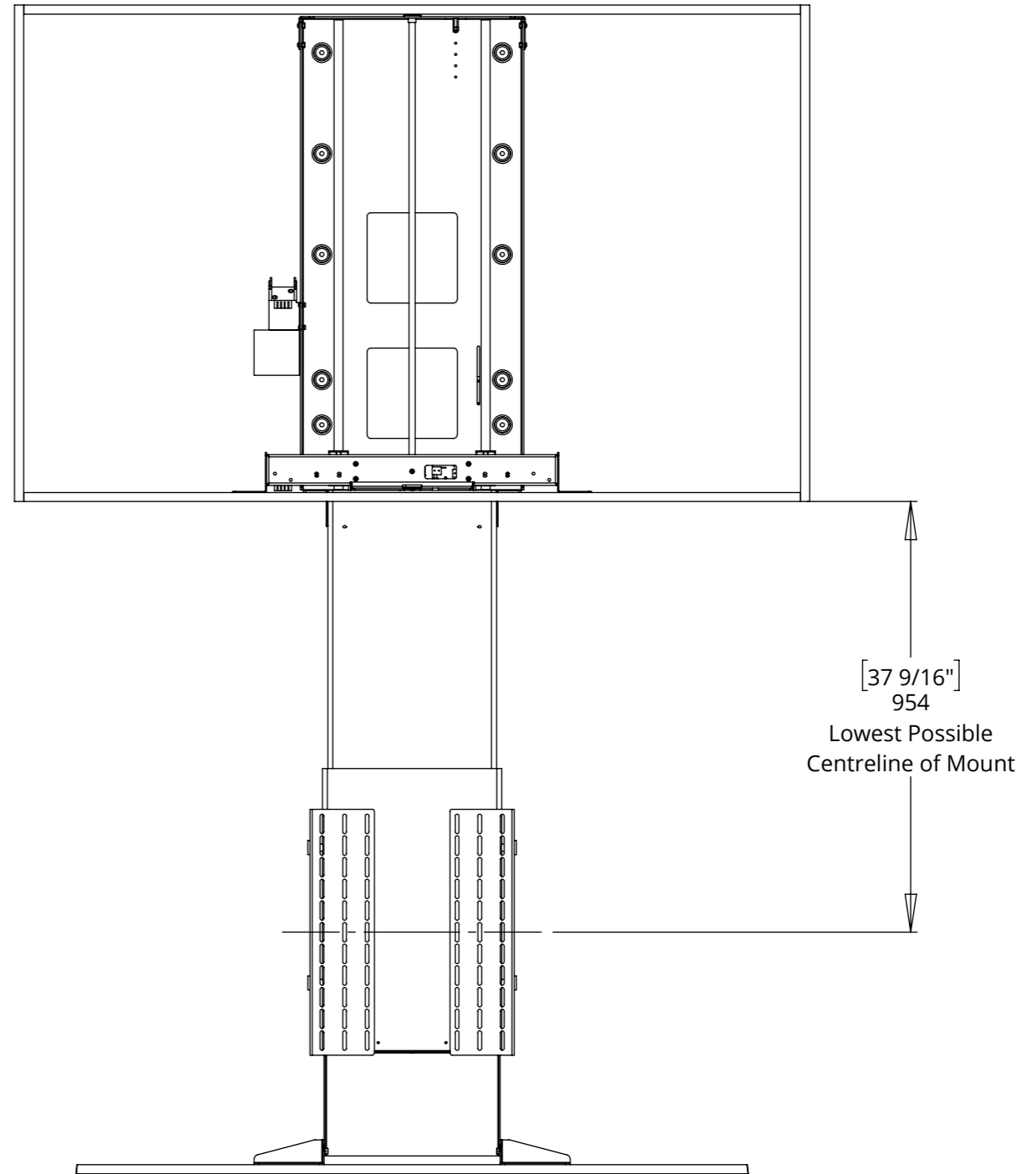
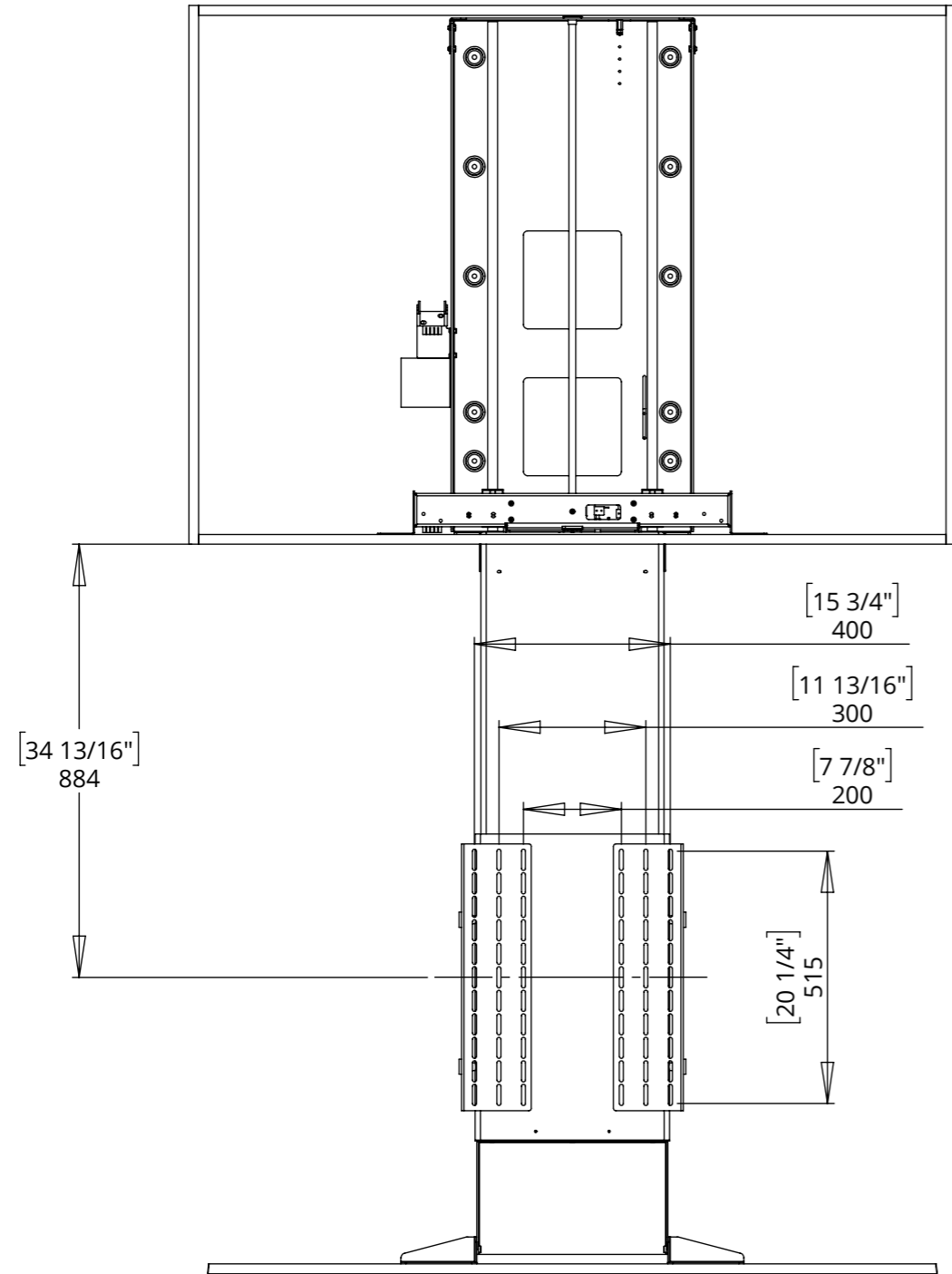


future automation

INVERTED LIFT SYSTEM MEDIUM WITH TELESCOPE

SCREEN MOUNT ADJUSTABILITY

A standard adjustable height VESA 400 mount is included. This is also compatible with VESA 300 and 200 mounting patterns



I-LSM-TU-FP-7



future automation

INVERTED LIFT SYSTEM MEDIUM WITH TELESCOPE

OVERALL MECHANISM DIMENSIONS

